

# HP A58x0AF

## 650W AC (JC680A) & 650W DC (JC681A)

### Power Supplies User Guide



5998-1605

Part number: 5998-1605

Document version: 6PW102-20111103



## **Legal and notice information**

© Copyright 2011 Hewlett-Packard Development Company, L.P.

No part of this documentation may be reproduced or transmitted in any form or by any means without prior written consent of Hewlett-Packard Development Company, L.P.

The information contained herein is subject to change without notice.

HEWLETT-PACKARD COMPANY MAKES NO WARRANTY OF ANY KIND WITH REGARD TO THIS MATERIAL, INCLUDING, BUT NOT LIMITED TO, THE IMPLIED WARRANTIES OF MERCHANTABILITY AND FITNESS FOR A PARTICULAR PURPOSE. Hewlett-Packard shall not be liable for errors contained herein or for incidental or consequential damages in connection with the furnishing, performance, or use of this material.

The only warranties for HP products and services are set forth in the express warranty statements accompanying such products and services. Nothing herein should be construed as constituting an additional warranty. HP shall not be liable for technical or editorial errors or omissions contained herein.

---

# Contents

Power supply overview	1
Functions	1
Technical specifications	1
Appearance	3
LEDs	4
Installing and removing a power supply	6
Safety recommendations	6
Tools	6
Installing and removing a power supply	7
Installing the power supply	7
Connecting the power cord	9
Removing the power supply	12
Support and other resources	15
Contacting HP	15
Subscription service	15
Related information	16
Documents	16
Websites	16
Conventions	16

---

# Power supply overview

## Functions

HP A58x0AF 650W AC power supply (JC680A), referred to as 650W AC power supply hereafter, is a power supply with AC input and DC output, and HP A58x0AF 650W DC power supply (JC681A), referred to as 650W DC power supply hereafter, is a power supply with DC input and DC output. They can provide up to 650 W of output. They deliver the following features:

---

Feature	Description
Protection function	Protection for over-current input, under-voltage input, over-voltage output, output short circuit, and overheat.
Support for redundancy	The power supplies can work in 1+1 redundant mode, and support load sharing.
Support for hot swapping	You can plug or unplug a power supply when the switch is operating properly.

---

## Technical specifications

---

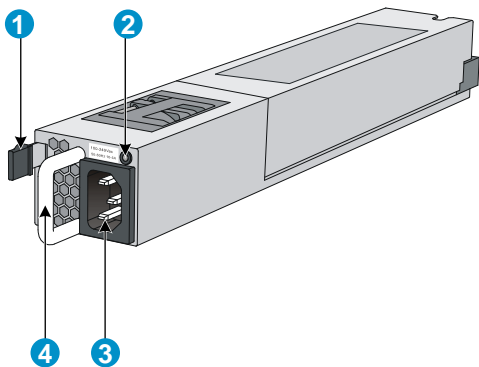
Item	Specifications
Rated input voltage	<ul style="list-style-type: none"><li>650W AC power supply: 100 VAC to 240 VAC; 50 or 60 Hz</li><li>650W DC power supply: -40 VDC to -60 VDC</li></ul>

---

<b>Item</b>	<b>Specifications</b>
Rated output voltage range	12 V/5 V
Maximum output current	52.9 A (12 V)/3 A (5V)
Maximum output power	650 W
Dimensions (H × W × D)	40.2 × 50.5 × 300 mm (1.58 × 1.99 × 11.81 in)
Operating temperature	650W AC power supply: -5°C to 50°C (23°F to 122°F) 650W DC power supply: -5°C to 45°C (23°F to 113°F)
Relative humidity	5% to 95%

# Appearance

Figure 1 650W AC power supply appearance



---

(1) Latch

(2) Status LED

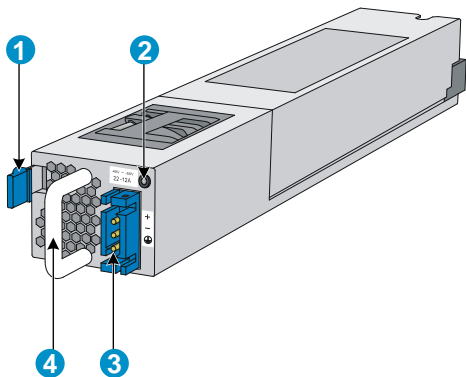
---

(3) AC power receptacle

(4) Handle

---

Figure 2 650W DC power supply appearance



(1) Latch

(2) Status LED

(3) DC power receptacle

(4) Handle

## LEDs

A 650W AC/650W DC power supply has a status LED on its front panel. The following table lists the LED status and description.

LED status	Description
Steady green	The power supply operates properly, and is in the active state.
Blinking green	The power supply operates properly, and is in the standby state.

<b>LED status</b>	<b>Description</b>
Steady red	The power supply has failed or entered the protected state.
Red/Green blinking alternatively	The power supply alarms. The power supply encounters exceptional power output problems, for example, over-voltage output, under-voltage output, over-current output, over-load, and over-heat, but does not enter the protected state.
Blinking red	The power supply has no power input. The switch has two power supplies. If one has power input, but the other does not, the status LED of the power supply that has no power input blinks red.
Off	The power supplies have no power input.



---

# Installing and removing a power supply

## Safety recommendations

To avoid possible bodily injury and power supply and device damage, follow these safety recommendations:

- When installing and removing a power supply, always wear an ESD-preventive wrist strap and make sure it makes good skin contact.
- Before installing the power supply, to avoid power supply and device damage, make sure that the voltage of the power source is the same as the rated voltage of the power supply, and the output voltage of the power supply is the same as the voltage required by the device.
- To avoid bodily injury, do not touch any cords or terminals of the power supply.
- Do not place the power supply in a wet area, and prevent liquid from flowing into the power supply.
- To avoid power supply damage, do not open the power supply. When the internal circuits or components of the power supply fail, contact the maintainer for examining and repairing.

## Tools

When installing and removing a power supply and power cords, you must wear an ESD-preventive wrist strap. Prepare it yourself.

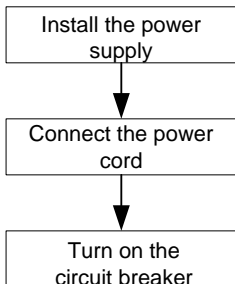
## Installing and removing a power supply

The installing and removing procedures of the 650W AC power supply are similar to the 650W DC power supply. This section takes the 650W AC power supply for example.

### Installing the power supply

To avoid bodily injury or device damage, follow the procedure in [Figure 3](#) when installing the power supply.

**Figure 3 Power supply installation procedure**

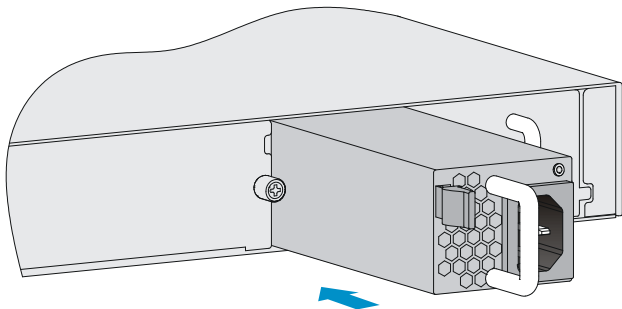


Follow these steps to install the power supply:

- Step1** Put on the ESD-preventive wrist strap, making sure that the strap makes good skin contact and is well grounded.
- Step2** Unpack the power supply. Make sure that the power supply is of the required model.

**Step3** As shown in **Figure 4**, make sure that the power supply is placed in a correct vertical direction. The power supply and the power supply slot are designed for avoiding upside down installation. If the vertical direction of the power supply is incorrect, you cannot insert the power supply completely into the slot. Holding the handle of the power supply with one hand and supporting the bottom of the power supply with the other, slide the power supply along the guide rails into the slot. When the power supply is completely inserted into the slot, you can hear that the latch of the power supply clicks into the slot.

**Figure 4 Install the power supply**



---

 **CAUTION:**

- When you insert the power supply into the slot, you can do that through slight inertia so that the back end of the power supply can have a good touch with the backplane.
  - To avoid damaging or bending the terminals of the power supply, if the insertion direction is improper during the installation, you must pull the power supply out, adjust the direction, and insert it again.
  - Save the blank panel and the packaging box and packaging bag of the power supply for future use.
- 

## Connecting the power cord

### Connecting the AC power cord

---

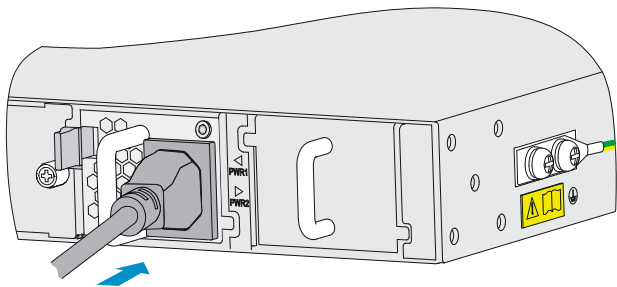
 **WARNING!**

- Make sure that each power cord has a separate circuit breaker.
  - Turn off the circuit breaker before connecting the power cord.
- 

Follow these steps to connect the AC power cord:

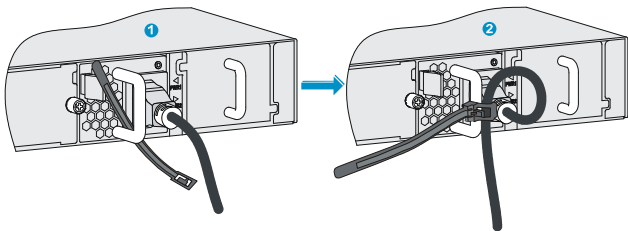
- Step1** As shown in [Figure 5](#), plug the female connector end of the AC power cord into the AC power receptacle on the switch.

**Figure 5** Connect the AC power cord



**Step2** As shown in [Figure 6](#), use the cable tie to secure the power cord to the handle of the power supply.

**Figure 6** Fix the AC power cord



**Step3** Plug the other end of the AC power cord into the socket strip of the power source, and turn on the circuit breaker of the power source.

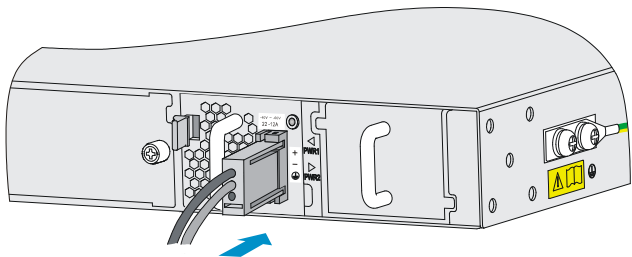
**Step4** Check the LED on the power supply. If the LED is steady green or blinking green, the power cord is correctly connected. If the LED is off or red, check the installation conditions, troubleshoot the problems, and try again until the LED is normal.

## Connecting the DC power cord

Follow these steps to connect the DC power cord:

**Step1** As shown in [Figure 7](#), insert the connector of the DC power cord into the DC power receptacle of the switch. The connector of the DC power cord and the DC power receptacle are designed for avoiding upside down installation. Make sure that the vertical direction of the connector is correct.

**Figure 7** Connect the DC power cord



**Step2** Use the cable tie to secure the power cord to the handle of the power supply. For more information, see [Step2](#) on page 10.

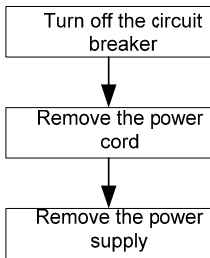
**Step3** Connect the other end of the DC power cord to the DC power source.

**Step4** Check the LED on the power supply. If the LED is steady green or blinking green, the power cord is correctly connected. If the LED is off or red, check the installation conditions, troubleshoot the problems, and try again until the LED is normal.

## Removing the power supply

To avoid bodily injury or device damage, follow the procedure in [Figure 8](#) when removing the power supply.

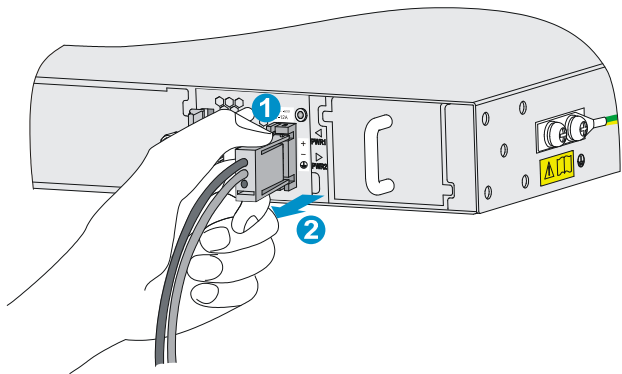
**Figure 8 Power supply removing procedure**



Follow these steps to remove the power supply:

- Step1** Turn off the circuit breaker of the power cord.
- Step2** Put on the ESD-preventive wrist strap, making sure that the strap makes good skin contact and is well grounded.
- Step3** Loosen the cable tie, and take off the power cord. When removing a DC power cord, squeeze the tabs on the power cord connector with your thumb and forefinger and then pull the connector out.

**Figure 9 Remove the power cord connector**



---

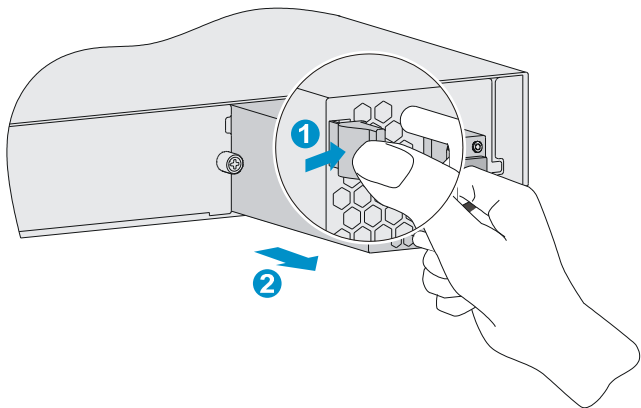
(1) Squeeze the tabs on the power cord connector      (2) Pull the connector out

---

**Step4** As shown in [Figure 10](#), grasp the handle of the power supply with one hand, use the thumb to press the latch towards the handle, and pull the power supply at the same time. After pulling the power supply part-way out, hold the bottom of the power supply with the other hand, and pull the power supply slowly along the guide rails out of the slot.



**Figure 10 Remove the power supply**



**Step5** Put the removed power supply on an antistatic mat or into the initial package.

---

**NOTE:**

If you do not insert another power supply into the slot after removing the power supply, install the blank panel to the power supply slot to prevent dust from entering the chassis.

---

---

# Support and other resources

## Contacting HP

For worldwide technical support information, see the HP support website:

<http://www.hp.com/support>

Before contacting HP, collect the following information:

- Product model names and numbers
- Technical support registration number (if applicable)
- Product serial numbers
- Error messages
- Operating system type and revision level
- Detailed questions

## Subscription service

HP recommends that you register your product at the Subscriber's Choice for Business website:

<http://www.hp.com/go/wwalerts>

After registering, you will receive email notification of product enhancements, new driver versions, firmware updates, and other product resources.

## Related information

### Documents

To find related documents, browse to the Manuals page of the HP Business Support Center website:

<http://www.hp.com/support/manuals>

- For related documentation, navigate to the Networking section, and select a networking category.
- For a complete list of acronyms and their definitions, see *HP A-Series Acronyms*.

### Websites

- HP.com <http://www.hp.com>
- HP Networking <http://www.hp.com/go/networking>
- HP manuals <http://www.hp.com/support/manuals>
- HP download drivers and software <http://www.hp.com/support/downloads>
- HP software depot <http://www.software.hp.com>

## Conventions

This section describes the conventions used in this documentation set.

### Command conventions





Convention	Description
<b>Boldface</b>	<b>Bold</b> text represents commands and keywords that you enter literally as shown.

<b>Convention</b>	<b>Description</b>
<i>Italic</i>	<i>Italic</i> text represents arguments that you replace with actual values.
[ ]	Square brackets enclose syntax choices (keywords or arguments) that are optional.
{ x   y   ... }	Braces enclose a set of required syntax choices separated by vertical bars, from which you select one.
[ x   y   ... ]	Square brackets enclose a set of optional syntax choices separated by vertical bars, from which you select one or none.
{ x   y   ... } *	Asterisk-marked braces enclose a set of required syntax choices separated by vertical bars, from which you select at least one.
[ x   y   ... ] *	Asterisk-marked square brackets enclose optional syntax choices separated by vertical bars, from which you select one choice, multiple choices, or none.
&<1-n>	The argument or keyword and argument combination before the ampersand (&) sign can be entered 1 to n times.
#	A line that starts with a pound (#) sign is comments.

## GUI conventions

Convention	Description
<b>Boldface</b>	Window names, button names, field names, and menu items are in bold text. For example, the <b>New User</b> window appears; click <b>OK</b> .
>	Multi-level menus are separated by angle brackets. For example, <b>File &gt; Create &gt; Folder</b> .

## Symbols

Convention	Description
 <b>WARNING</b>	An alert that calls attention to important information that if not understood or followed can result in personal injury.
 <b>CAUTION</b>	An alert that calls attention to important information that if not understood or followed can result in data loss, data corruption, or damage to hardware or software.
 <b>IMPORTANT</b>	An alert that calls attention to essential information.
<b>NOTE</b>	An alert that contains additional or supplementary information.
 <b>TIP</b>	An alert that provides helpful information.

## Network topology icons

---



Represents a generic network device, such as a router, switch, or firewall.

---



Represents a routing-capable device, such as a router or Layer 3 switch.

---



Represents a generic switch, such as a Layer 2 or Layer 3 switch, or a router that supports Layer 2 forwarding and other Layer 2 features.

---

## Port numbering in examples

The port numbers in this document are for illustration only and might be unavailable on your device.