



Cisco Accessories

- [Batteries, on page 1](#)
- [Cisco Wireless IP Phone 8821 AC Power Adapter, on page 4](#)
- [USB Cable, on page 7](#)
- [Desktop Chargers, on page 8](#)
- [Multichargers, on page 12](#)
- [Carry Cases, on page 16](#)
- [Silicone Case, on page 18](#)
- [Other Accessories, on page 20](#)
- [Cisco Accessory Part Numbers, on page 21](#)
- [Desktop Charger Specifications, on page 24](#)
- [Multicharger Specifications, on page 26](#)

Batteries

Your phone comes with a Lithium ion battery, and you can order spare batteries.

You can find the battery installation instructions in the *Cisco Wireless IP Phone 8821 and 8821-EX User Guide*.



Caution

Use only approved batteries. Use of unapproved batteries might be dangerous, and invalidates the warranty on your phone.

The fully charged battery provides the following hours of service:

- Up to 11.5 hours of talk time (depends on phone firmware and charger version)

The following table shows the differences in talk time when you use:

- The new 4.35V Cisco Wireless IP Phone 8821 Desktop Charger and Cisco Wireless IP Phone 8821 Multi Charger
- The Cisco Wireless IP Phone 8821-EX Desktop Charger and Cisco Wireless IP Phone 8821-EX Multi Charger

Table 1: Comparison of Talk Times

Condition	Original Cisco Wireless IP Phone 8821 Desktop Charger and Cisco Wireless IP Phone 8821 Multi Charger	New Cisco Wireless IP Phone 8821 Desktop Charger and Cisco Wireless IP Phone 8821 Multi Charger	Cisco Wireless IP Phone 8821-EX Desktop Charger and Cisco Wireless IP Phone 8821-EX Multi Charger
Phone charged in charger, with wall adapter, or with USB Phone running Firmware Release 11.0(4)SR3 or earlier	9.5 hours	9.5 hours	9.5 hours
Phone charged in charger, with wall adapter, or with USB Phone running Firmware Release 11.0(5) or later	11.5 hours	11.5 hours	9.5 hours
Spare battery charged in the charging slot	9.5 hours	11.5 hours	9.5 hours

- Up to 145 hours of standby time

Battery life depends on a number of factors including:

- On time—The battery life is reduced when the phone is turned on. Calls, messages, application use, Bluetooth use, and actions like menu navigation use power.
- Scan mode—Your phone can be set up to scan the access points in three different ways (Continuous, Auto, Single AP). If your phone uses Continuous or Auto scan modes, the phone requires more power, which reduces battery talk time.



Caution

The expected lifecycle for a battery is two years. Based on the average usage, this corresponds to approximately 500 charges. You can check the date printed on the battery to calculate the age of the battery. We recommend you to replace the battery when it reaches its end of life.

If you require longer talk times, you will find it useful to have a spare, charged battery.

For battery specifications, see the *Cisco Wireless IP Phone 8821 Data Sheet* and *Cisco Wireless IP Phone 8821-EX Data Sheet* at <http://www.cisco.com/c/en/us/products/collaboration-endpoints/unified-ip-phone-8800-series/datasheet-listing.html>

Related Topics

[Cisco Accessory Part Numbers](#), on page 21

Damaged Battery Identification

Your phone battery can develop physical signs of damage. Physical signs include:

- Swelling
- Bending
- Broken end caps



Note We recommend that you check the battery and battery compartment for physical signs of damage when you replace your battery.

Swollen Battery

Identification

- The battery doesn't sit flat on a table. It may rock if you touch the corners.
- The installed battery is not flat in the battery compartment.
- The back cover won't completely close (especially in the middle of the door)
- The battery doesn't fall out of the battery compartment when you try to remove it. You may *think* that you need to pry the battery out of the compartment.



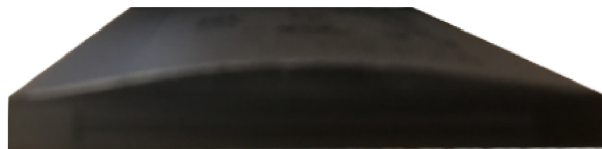
Caution **Don't** try to pry the battery out of the compartment.

Examples

The next image shows a swollen battery from the end.



The next image shows another swollen battery.



The next image shows a swollen battery in the battery compartment. Notice that the battery isn't flush with the compartment walls around the battery perimeter.



The next image shows the same swollen battery when the cover is put on. Notice that the middle of the cover is arched. The catches in the middle of the cover won't easily connect.



The battery may also swell along the length or width, which makes the battery hard to remove. Don't use any instrument to pry the battery out.

Bent Battery

Identification

The battery doesn't sit flat on a table. It may rock if you touch the corners.

Example

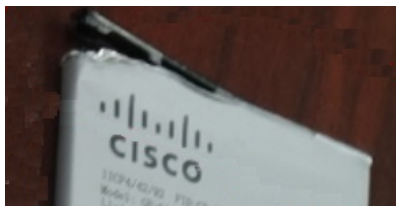


End Caps are Broken or Damaged

Identification

The plastic caps at the ends of the battery aren't properly attached.

Example



Cisco Wireless IP Phone 8821 AC Power Adapter

The Cisco Wireless IP Phone 8821 AC Power Adapter enables you to quickly charge your phone battery. You can use the phone while you are charging the battery. When you order your phone, make sure that you order the power adapter for your region.

The battery takes approximately 3 hours to recharge using the AC Power Adapter.

**Caution**

Use only Cisco-specified AC power supplies for the Cisco Wireless IP Phone 882x Series.

Related Topics

[Cisco Accessory Part Numbers](#), on page 21

Prepare the Power Adapter

The power adapter for your phone is compact. Before you use the power adapter, you have to unfold the prongs. After you use the adapter, you can fold in the prongs.

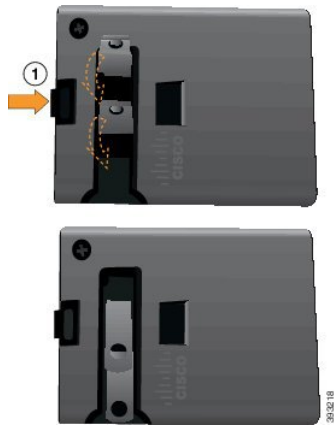
The power adapter for your region may also require an additional clip to allow the adapter to be plugged into the electrical outlet.

Procedure

- Step 1** Catch the edge of a prong with your finger and pull the prong up until it clicks into position.



- Step 2** (Optional) Install the international power clip.
- Step 3** (Optional) Before you close the adapter, remove the international power clip.
- Step 4** (Optional) Hold the lever on the top of the adapter down and press the prongs down to close the adapter.



Charge the Battery with the AC Power Supply

You can charge your phone using an AC power supply. When you use the power supply to charge your phone, the battery can take up to 3 hours to fully charge.

The wide connector on the USB cable connects to the phone using magnets to hold it secure. It has pins that you need to align correctly. If you hold the phone so that the screen is towards you, the battery icon on the connector is visible.



Caution

Do not charge the phone in a hazardous environment.

Do not charge the phone if it is wet.

Before you begin

You need the USB power cable supplied with your phone.

You need to prepare the power adapter for use as described in [Prepare the Power Adapter, on page 5](#).

Procedure

-
- Step 1** Plug the USB cable into the bottom of the phone with the pins aligned.
- Step 2** Plug the USB cable into the power adapter.
- Step 3** Plug the power adapter into the electrical outlet.
-

USB Cable

You can connect your phone to your computer using a special USB cable.

The wide connector on the USB cable connects to the phone with magnets to hold it secure. It has pins that you must align correctly. If you hold the phone so that the screen is toward you, the battery icon on the connector is visible.

Related Topics

[Cisco Accessory Part Numbers](#), on page 21

Charge the Battery with the USB Cable and a USB Port on Your Computer

You can charge your phone using your computer. When you use the computer to charge your phone, the battery can take up to 6 hours to fully charge.

The wide connector on the USB cable connects to the phone using magnets to hold it secure. It has pins that you need to align correctly. If you hold the phone so that the screen is towards you, the battery icon on the connector is visible.



**Caution**

Do not charge the phone in a hazardous environment.

Do not charge the phone if it is wet.

Procedure

- Step 1** Connect the long connector of the USB cable to the bottom of the phone with the pins aligned.
- Step 2** Plug the other end into the USB port in the computer.

Desktop Chargers

You can use the Cisco Wireless IP Phone 8821 Desktop Charger to charge your Cisco Wireless IP Phone 8821 and spare phone battery. The charger works on AC power or from a charged spare phone battery. It can be secured with a standard laptop cable lock. This charger has a label on the back to show the maximum voltage (4.35 V).

You can use the Cisco Wireless IP Phone 8821-EX Desktop Charger to charge your Cisco Wireless IP Phone 8821-EX and spare phone battery. The charger works on AC power or from a charged spare phone battery. It can be secured with a standard laptop cable lock. The charger looks the same as the Cisco Wireless IP Phone 8821 Desktop Charger except that it shows the graphic of the Cisco Wireless IP Phone 8821-EX and doesn't have the voltage label.

The following figure shows the charger with a phone.

Figure 1: Cisco Wireless IP Phone 8821 and Cisco Wireless IP Phone 8821 Desktop Charger

**Caution**

The Cisco Wireless IP Phone 8821 Desktop Charger can only charge the Cisco Wireless IP Phone 8821 and a spare battery for that phone. You can't charge the Cisco Wireless IP Phone 8821-EX or its spare batteries in the Cisco Wireless IP Phone 8821 Desktop Charger.

In this document, the term *desktop charger* refers to both chargers.

If your phone has a protective case, you don't need to remove the case before you charge the phone in the desktop charger. You adapt the charger to fit the phone.

You can use a USB to Ethernet adapter (dongle) to connect the desktop charger to the Ethernet for only automatic Wi-Fi profile provisioning and certificate enrollment purposes. You cannot use the dongle to make voice calls over the Ethernet. For more information on the USB port, see the *Cisco Wireless IP Phone 8821 and 8821-EX Administration Guide*.

**Caution**

Do not use chargers or handsfree mode in a Potentially Explosive Atmosphere.

Do not charge the phone if it is wet.

Built-in Speakerphone

The charger includes a speakerphone that you can use while the phone is docked. Use the phone volume buttons to control the speakerphone volume, and the **Mute** button on the charger itself. When the speakerphone is muted, the **Mute** button lights red.

Phone Charging Indications

When you put the phone into the charger, the phone indicates that the battery is charging with the red LED on the top of the phone. If the phone is turned on when you put it into the charger, you see a message on the screen. If the phone is turned off or the battery is too weak, you see an icon displayed on the screen. When the battery is charged, the phone LED is green.

Spare Battery Charging Indications

You can charge a spare battery with the additional charging port behind the main phone charging port. When you put a spare battery into the charger, the Battery LED (to the right of the phone) lights to show the charging status:

- Red—The spare battery is charging.
- Green—The spare battery is fully charged.

Related Topics

[Desktop Charger Specifications](#), on page 24

[Cisco Accessory Part Numbers](#), on page 21

Set Up the Desktop Charger

You should place the desktop charger on a stable work surface.

Before you begin

You need the cable that is provided with the charger. This cable has a plug on one end and a USB connector on the other end.

You need the power adapter that comes with the phone.

Procedure

- Step 1** Plug the plug end of the cable into the desktop charger.
- Step 2** Plug the USB end of the cable into the power adapter and plug the power adapter into the electrical outlet.
-

Charge Your Phone with the Desktop Charger

You can tell when your phone is charging in the charger when the phone LED lights red and a message or icon displays on the phone screen. When the battery is fully charged, the LED turns green. Your phone can take up to 3 hours to recharge.

If your phone has a protective case, you don't need to remove the case before you charge the phone in the desktop charger. You adapt the charger to fit the phone.

When you put the phone into the charger, make sure that you align the charging pins on the bottom of the phone with the connector in the charger. When the phone is correctly placed in the charger, it is held in place with magnets. If the LED does not light, then the alignment is not correct.



- Caution** Do not charge the phone in a hazardous environment.
- Do not charge the phone if it is wet.
-

Procedure

- Step 1** (Optional) Adapt the charger for a phone in a case: Turn the charger so that the back is facing you, put three fingers about 3/4 of the way into the cup, press in, and lift. The cup should slide out.



Note You might need to use two hands to remove the cup the first time.

- Step 2** Place your phone in the charging slot with the screen facing towards you. If your phone is in a case, press the phone into the charging slot to ensure that the phone connects with the contacts.

Make sure that the LED on the phone lights red. If the LED does not light up, remove the phone and reinsert it into the charger.

If your phone is in a case, the phone and case will tilt out because of the case.

- Step 3** When you remove the phone from the charger, tilt the phone forward and lift it up to disconnect the connector from the magnets.



- Step 4** (Optional) Slide the charging cup into the charger. Make sure that the cup is flush with the front and top of the charger.



Charge Your Spare Battery with the Desktop Charger

You can charge a spare battery in the desktop charger. The battery can take up to 3 hours to charge.



Caution Do not charge the battery in a hazardous environment.

When the battery is charging, the spare battery LED on the charger lights red. When the battery is charged, the spare battery LED on the charger lights green.

Procedure

- Step 1** Hold the battery so that the Cisco label faces you, and the arrows on the battery point down.
- Step 2** Place the spare battery in the slot behind the phone cradle and press down firmly.
-

Multichargers

You can charge up to six Cisco Wireless IP Phone 8821 and six spare batteries at the same time with the Cisco Wireless IP Phone 8821 Multi Charger. If your phone is in a protective case, you can charge it without removing the case. This charger has a label on the back to show the maximum voltage (4.35 V).

You can charge up to six Cisco Wireless IP Phone 8821-EX and six spare batteries at the same time with the Cisco Wireless IP Phone 8821-EX Multi Charger. If your phone is in a protective case, you can charge it without removing the case. The charger looks the same as the Cisco Wireless IP Phone 8821 Multi Charger except that it shows the graphic of the Cisco Wireless IP Phone 8821-EX and doesn't have the voltage label.

The following figure shows the multicharger. The phones are placed in the charging cups on the left and right, and the spare batteries are placed in the center.

Figure 2: Cisco Wireless IP Phone 8821 and Cisco Wireless IP Phone 8821 Multi Charger



You can place the multicharger on a work surface or mount it on a wall with the wall mount kit. You can also secure the multicharger with a standard laptop cable lock.

**Caution**

The Cisco Wireless IP Phone 8821 Multi Charger can only charge the Cisco Wireless IP Phone 8821 and a spare battery for that phone. You can't charge the Cisco Wireless IP Phone 8821-EX or its spare batteries in the Cisco Wireless IP Phone 8821 Multi Charger.

In this document, the term *multicharger* refers to both chargers.

The LED on the phone shows the charging status. When the battery is charging, the LED lights red. When the battery is charged, the LED lights green.

The LED beside the spare battery shows the charging status. When the battery is charging, the LED lights red. When the battery is charged, the LED lights green.

Battery slot LEDs can take several minutes to indicate that the battery is fully charged. If you move a fully-charged battery to another slot, the LED might initially light red before it turns green.

**Caution**

Do not use chargers in a Potentially Explosive Atmosphere.
Do not charge the phone if it is wet.

Related Topics

[Multicharger Specifications](#), on page 26
[Cisco Accessory Part Numbers](#), on page 21

Set Up the Multicharger

The power jack is on the right side of the multicharger.

Procedure

-
- | | |
|---------------|--|
| Step 1 | Plug the jack end of the power cord into the multicharger. |
| Step 2 | Plug the other end of the power cord into the power adapter. |
| Step 3 | Plug the power adapter into the electrical outlet. |
| Step 4 | Place the multicharger on a stable work surface. |
-

Install the Multicharger Wall Mount Kit

The wall mount kit comes with the following components:

- bracket
- package with 5 screws and 5 self-tapping wall anchors

Before you begin

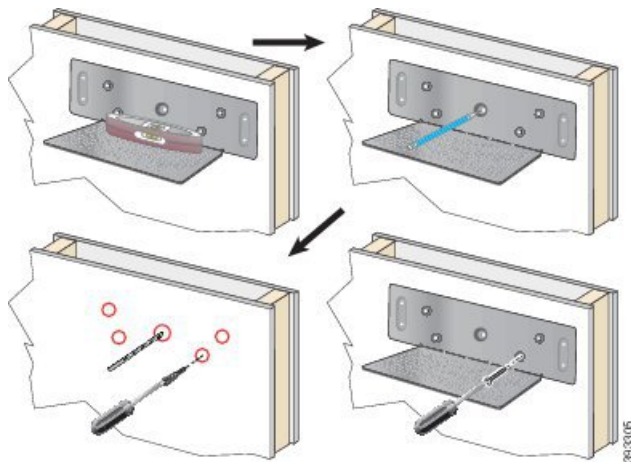
You need the following tools:

- Drill and a 0.25 inch drill bit
- Pencil
- Level
- Philips #1 and #2 screwdrivers

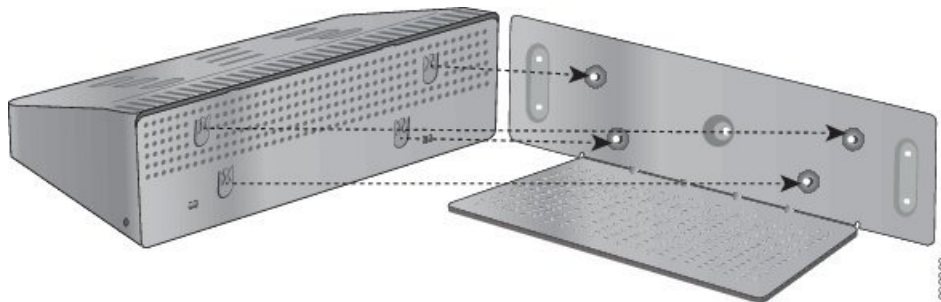
You need the power cable and power adapter.

Procedure

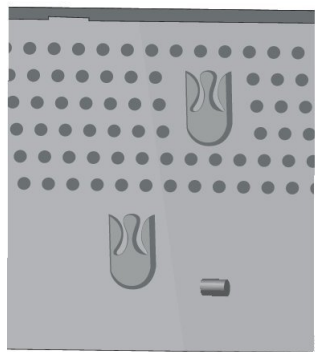
-
- | | |
|---------------|--|
| Step 1 | Determine the location for the bracket. The bottom right corner of the bracket must be less than 50 inches (127 cm) from an electrical outlet. |
|---------------|--|

Step 2 Mount the wall bracket.

- Hold the bracket on the wall, as shown in the diagram.
- Use the level to ensure that the bracket is level and use a pencil to mark the screw holes.
- Install the anchors, using the drill and drill bit.
- Screw the bracket to the wall.

Step 3 Locate the post holders in the multicharger.**Step 4** Hold the multicharger so that the post holders are in front of the posts on the bracket, press the multicharger towards the wall, and then push the multicharger down so that the posts seat into the holder.

Here is a close-up of the post holder.



- Step 5** Plug the jack end of the power cord into the multicharger.
- Step 6** Plug the other end of the power cord into the power adapter.
- Step 7** Plug the power adapter into the electrical outlet.
-

Charge Your Phone with the Multicharger

You can tell when your phone is charging in the multicharger when the phone LED lights red. When the battery is fully charged, the LED turns green. Your phone can take up to 3 hours to recharge.

If your phone has a protective case, you don't need to remove the case before you charge the phone in the multicharger. You adapt the multicharger to fit the phone.

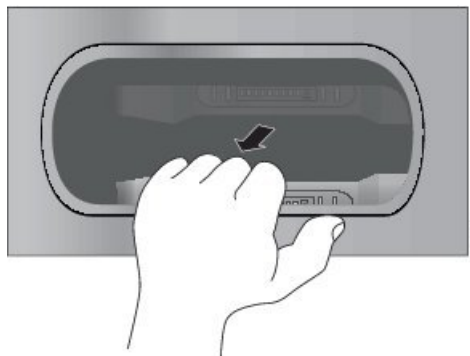
When you put the phone into the multicharger, make sure that you align the charging pins on the bottom of the phone with the connector in the multicharger. If the LED does not light, then the alignment is not correct.



- Caution** Do not charge the phone in a hazardous environment.
- Do not charge the phone if it is wet.
-

Procedure

- Step 1** (Optional) Adapt the charger for a phone in a case: Reach into the cup with three fingers, locate the slots on the inside of the cup, and use the slots to pull the cup out.



- Step 2** Place your phone in the empty charging slot. If your phone is in a case, press the phone into the charging slot to ensure that the phone connects with the contacts.
- Make sure that the LED on the phone lights red. If the LED does not light up, remove the phone and reinsert it into the multicharger.
- Step 3** (Optional) Slide the charging cup into the multicharger and press the cup into place so that the cup is flush with the top of the multicharger.
-

Charge Your Spare Battery with the Multicharger

You can charge a spare battery in the multicharger. The battery can take up to 3 hours to charge.

**Caution**

Do not charge the battery in a hazardous environment.

When the battery is charging, the Battery LED beside the battery lights red. When the battery is charged, the Battery LED lights green.

Procedure

Place the battery in an empty spare battery slot, aligning the battery contacts with the charger connector.

If the Battery LED does not light red, remove the battery and reinsert it into the battery slot.

Carry Cases

You can put your phone into a carry case to make it easy to carry your wireless phone and to provide some protection for the phone. When your phone is in the case, you don't have to remove the case to charge the phone.

We have the following cases available:

- Cisco Wireless IP Phone 8821 and 8821-EX Leather Case
- Cisco Wireless IP Phone 8821 and 8821-EX Holster Case

You can attach a Cisco Wireless IP Phone 8821 and 8821-EX Belt Clip or a Cisco Wireless IP Phone 8821 and 8821-EX Pocket Clip to either case. The following picture shows the belt clip on the left and the pocket clip on the right.



When you buy a case, we supply both clips and you can also order replacement clips.



Note Cisco does not endorse, support, or test third party cases or covers for the 8821 Wireless Phones. Using your Cisco Wireless IP Phone 8821 with third party cases or covers may void your warranty.

Cisco Wireless IP Phone 8821 and 8821-EX Leather Case

You can slide the phone into the leather case to protect the phone and then attach the case to the belt clip or pocket clip. The button on the back of the case attaches to the clip. The following pictures show the front and back of the leather case.



You can also clip a lanyard to the metal ring on the top of the leather case

When your phone is in the case, you don't have to remove the case to charge the phone.

Cisco Wireless IP Phone 8821 and 8821-EX Holster Case

You can press the phone into the holster case to protect the phone and then attach the case to the belt clip or pocket clip. The button on the back of the case attaches to the case to the clip. The following pictures show the front and back of the holster case.



When your phone is in the case, you don't have to remove the case to charge the phone.

Related Topics

[Cisco Accessory Part Numbers](#), on page 21

Silicone Case

You can use the Cisco Wireless IP Phone 8821 Silicone Case to protect your wireless phone. The case fits over either wireless phone model.

Figure 3: Cisco Wireless IP Phone 8821 and Cisco Wireless IP Phone 8821 Silicone Case



The case has these benefits:

- Hypoallergenic
- Antimicrobial
- Resistant to wear from 15% alcohol, 75% alcohol, 2.5% hydrogen peroxide, mineral oil, soap, water, bleach, and dish soap.



Note Use the lowest-strength cleaning agent to prolong the life and look of the case.

- Reduces damage when the phone is dropped
- Covers more of the phone than the other cases.

The case comes with an optional belt clip that you can slide onto the case.

The case doesn't need to be removed to charge the battery in the desktop charger or multicharger. You remove the cup in the charger to place the phone and case into the charger.

Related Topics

[Desktop Chargers](#), on page 8

[Multichargers](#), on page 12

Install the Cisco Wireless IP Phone 8821 Silicone Case

You put the phone into the case through the screen opening in the case. If you need to remove the case, reverse the steps below.

Procedure

- Step 1** Slide the bottom of the phone into the screen opening until the phone is completely in the case.



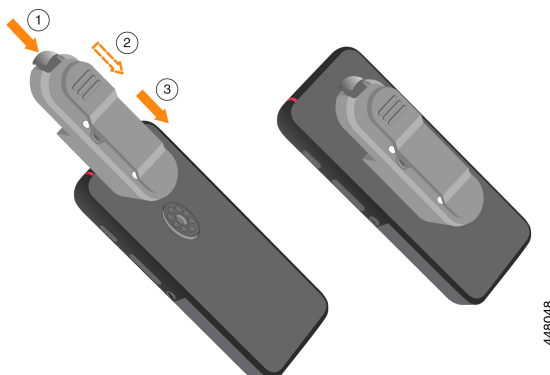
- Step 2** If the screen opening has rolled up, unroll it until it is flat.

- Step 3** One corner at a time, slide the case corner up to cover the phone.



- Step 4** If the screen opening has rolled up, unroll it until it is flat.

- Step 5** (Optional) If required, press the base of the belt clip in and slip the clip onto the post in the back of the case.



Clean the Silicone Case

Procedure

-
- Step 1** Remove the silicone case. You reverse steps in [Install the Cisco Wireless IP Phone 8821 Silicone Case, on page 19](#).
- Step 2** Clean the case,
- Step 3** Dry the case thoroughly. Don't put it back on the phone until it is completely dry.
- Step 4** Put the case back on the phone. See [Install the Cisco Wireless IP Phone 8821 Silicone Case, on page 19](#).
-

Other Accessories

Cisco Wireless IP Phone 8821 and 8821-EX Lanyards

You can attach the lanyard to the top of the wireless phone.

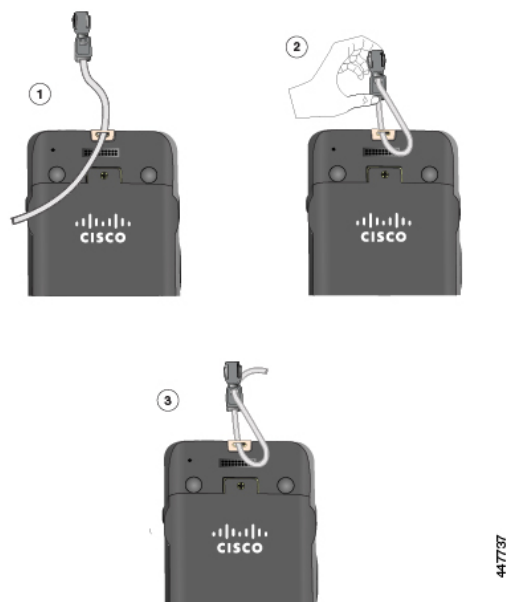
The following graphic shows the original lanyard.



To install the original lanyard, slip the loop of cord around the bar on the back of the phone and pass the lanyard through the loop.



The following graphic shows how to install the new lanyard.



To install the new lanyard, thread the lanyard through the slot in the phone and secure the end in the clip.

Cisco Wireless 8821 Battery Door and Cisco Wireless 8821-EX Battery Door

You can replace the battery door if the gasket on the door gets damaged. If the gasket is damaged, dirt and liquids can get into the battery compartment and cause damage to the phone. Failure to replace a broken gasket voids the phone warranty.



Note The battery doors are specific for the phone model. Be sure to order the correct version for your phone.

Related Topics

[Cisco Accessory Part Numbers](#), on page 21

Cisco Accessory Part Numbers

You can buy accessories for your Cisco Wireless IP Phone 882x Series from your local dealer or corporate representative.

The following tables gives the part number for the Cisco accessories. For more information, see the product datasheets at <http://www.cisco.com/c/en/us/products/collaboration-endpoints/unified-ip-phone-8800-series/datasheet-listing.html>

Table 2: Phone Spares and Accessories

Product Name	Part Number
Cisco Wireless 8821 and 8821-EX Battery	CP-BATT-8821=
Cisco Wireless 8821 Battery Door	CP-BDOOR-8821=

Product Name	Part Number
Cisco Wireless 8821-EX Battery Door	CP-BDOOR-8821-EX=
Cisco Wireless IP Phone 8821 and 8821-EX Power Supply for North America	CP-PWR-8821-NA=
Cisco Wireless IP Phone 8821 and 8821-EX Power Supply for Argentina	CP-PWR-8821-AR=
Cisco Wireless IP Phone 8821 and 8821-EX Power Supply for Australia	CP-PWR-8821-AU=
Cisco Wireless IP Phone 8821 and 8821-EX Power Supply for Brazil	CP-PWR-8821-BZ=
Cisco Wireless IP Phone 8821 and 8821-EX Power Supply for Central Europe	CP-PWR-8821-CE=
Cisco Wireless IP Phone 8821 and 8821-EX Power Supply for India	CP-PWR-8821-IND=
Cisco Wireless IP Phone 8821 and 8821-EX Power Supply for Korea	CP-PWR-8821-KR=
Cisco Wireless IP Phone 8821 and 8821-EX Power Supply for Japan	CP-PWR-8821-JP=
Cisco Wireless IP Phone 8821 and 8821-EX Power Supply for Switzerland	CP-PWR-8821-SW=
Cisco Wireless IP Phone 8821 and 8821-EX Power Supply for UK	CP-PWR-8821-UK=
Cisco Wireless IP Phone 8821 and 8821-EX Holster Case with both belt and pocket clip	CP-HOLSTER-8821=
Cisco Wireless IP Phone 8821 and 8821-EX Leather Case with both belt and pocket clip	CP-LCASE-8821=
Cisco Wireless IP Phone 8821 and 8821-EX spare Pocket Clips set	CP-PCLIP-8821=
Cisco Wireless IP Phone 8821 and 8821-EX spare Belt Clips set	CP-BCLIP-8821=
Cisco Wireless IP Phone 8821 and 8821-EX Lanyard Set	CP-LANYARD=
Cisco Wireless IP Phone 8821 Silicone Case	CP-8821-SILCASE=

Table 3: Desktop Chargers and Spares

Name	Part Number
Cisco Wireless IP Phone 8821 Desktop Charger Only	CP-DSKCH-8821=
Cisco Wireless IP Phone 8821-EX Desktop Charger Only	CP-DSKCH-8821-EX
Cisco Wireless IP Phone 8821 Desktop Charger, includes power supply	CP-DSKCH-8821-BUN
Cisco Wireless IP Phone 8821-EX Desktop Charger bundle, with power cord and power supply	CP-DSKCH-8821EX-BN
Cisco Wireless IP Phone 8821 and 8821-EX Desktop Charger Power Supply for NA	CP-PWR-DC8821-NA=
Cisco Wireless IP Phone 8821 and 8821-EX Desktop Charger Power Supply for Argentina	CP-PWR-DC8821-AR=

Name	Part Number
Cisco Wireless IP Phone 8821 and 8821-EX Desktop Charger Power Supply Power Supply for Australia	CP-PWR-DC8821-AU=
Cisco Wireless IP Phone 8821 and 8821-EX Desktop Charger Power Supply Power Supply for Brazil	CP-PWR-DC8821-BZ=
Cisco Wireless IP Phone 8821 and 8821-EX Desktop Charger Power Supply Power Supply for Central Europe	CP-PWR-DC8821-CE=
Cisco Wireless IP Phone 8821 and 8821-EX Desktop Charger Power Supply Power Supply for India	CP-PWR-DC8821-IND=
Cisco Wireless IP Phone 8821 and 8821-EX Desktop Charger Power Supply Power Supply for Korea	CP-PWR-DC8821-KR=
Cisco Wireless IP Phone 8821 and 8821-EX Desktop Charger Power Supply Power Supply for Japan	CP-PWR-DC8821-JP=
Cisco Wireless IP Phone 8821 and 8821-EX Desktop Charger Power Supply Power Supply for Switzerland	CP-PWR-DC8821-SW=
Cisco Wireless IP Phone 8821 and 8821-EX Desktop Charger Power Supply Power Supply for United Kingdom	CP-PWR-DC8821-UK=

Table 4: Multichargers and Spares

Name	Part Number
Cisco Wireless IP Phone 8821 Multi Charger bundle, with power cube, power adapter and country cord	CP-MCHGR-8821-BUN
Cisco Wireless IP Phone 8821-EX Multi-Charger bundle, with power cube, power adapter and country cord	CP-MCHGR-8821EX-BN
Cisco Wireless IP Phone 8821 Multi Charger Only	CP-MCHGR-8821=
Cisco 8821-EX Multi-Charger Only	CP-MCHGR-8821-EX=
Cisco Wireless IP Phone 8821 and 8821-EX Multi Charger Wall Mount and Kit	CP-MCHGR-8821-WMK=
All countries power cube	CP-PWR-CUBE-6=
Power Cord, NA	CP-PWR-CORD-NA=
Power Cord, Argentina	CP-PWR-CORD-AR=
Power Cord, Australia	CP-PWR-CORD-AU=
Power Cord, Brazil	CP-PWR-CORD-BZ=
Power Cord, Central Europe	CP-PWR-CORD-CE=
Power Cord, India	CP-PWR-CORD-IN=

Name	Part Number
Power Cord, Korea	CP-PWR-CORD-KR=
Power Cord, Japan	CP-PWR-CORD-JP=
Power Cord, Asia Pacific	CP-PWR-CORD-AP=
Power Cord, South Africa	CP-PWR-CORD-SA=
Power Cord, Switzerland	CP-PWR-CORD-SW=
Power Cord, UK	CP-PWR-CORD-UK=

Desktop Charger Specifications

Table 5: Physical Specifications

Item	Description
Dimensions (H x W x D)	3.0 x 7.3 x 4.0 in. (76 x 185 x 102 mm)
Weight	<ul style="list-style-type: none"> • Desktop charger: 1.41 pounds (641 g) • Power adapter: 0.08 pounds (38 g) • Total weight: 1.49 pounds (679 g)
Power supply	<ul style="list-style-type: none"> • Input: 100-240V, 0.2A, 50-60 Hz • Output: 5V, 2.0A • AC adapters (by geographical region)
Power consumption	10 watts
Operating temperature	32 to 104°F (0 to 40°C)
Storage temperature	-22 to 140°F (-30 to 60°C)
Relative humidity	10 to 95% (noncondensing)
Drop specification	Drop height: 750 mm (29.5 inch)
Vibration	0.41 Grms from 3 to 500 Hz with spectral break points of 0.0005 G ₂ / Hz at 10 Hz and 200 Hz and 5 dB/octave roll off at each end
Thermal shock	-22°F (-30°C) 24 hours; 158°F (70°C) 24 hours
Charging time	<ul style="list-style-type: none"> • Battery only: 2–4 hours • Phone: set by the phone

Table 6: Safety and Compliance

Item	Description
Safety	<ul style="list-style-type: none"> • UL 60950-1 • CSA C22.2 No. 60950-1 • EN 60950-1 • IEC 60950-1 • AS/NZS 60950.1
Electromagnetic compatibility (EMC) and electromagnetic interference (EMI)	<ul style="list-style-type: none"> • CFR 47 Part 15 Class A • ICES-003 Class A • EN 55022 Class A • CISPR 22 Class A • VCCI Class A • AS/NZS CISPR22 • CSPR 24 • EN 55024 • EN 50082-1 • EN 61000-6-1 • EN 61000-3-2 • EN 61000-3-3 • EN 61000-4-2 • EN 61000-4-3 • EN 61000-4-4 • EN 61000-4-5 • EN 61000-4-6 • EN 61000-4-11

Multicharger Specifications

Table 7: Physical Specifications

Item	Description
Dimensions (H x W x D)	14.17 x 9.06 x 4.14 in (360 x 230 x 105 mm)
Weight	<ul style="list-style-type: none"> • Multi-charger: 5.65 lb (2.57 kg) • Power supply: 0.77 lb (0.35 kg) • Mounting bracket: 1.47 lb (0.67 kg)
Power supply	<ul style="list-style-type: none"> • Input: 100-240VAC, 1.2A, 50–60 Hz • Output: 19V, 4.74A • AC adapters (by geographical region)
Power consumption	90 watts
Operating temperature	32 to 104°F (0 to 40°C)
Storage temperature	-22 to 140°F (-30 to 60°C)
Relative humidity	10 to 95% (noncondensing)
Drop specification	Drop height: 750 mm (29.5 inch)
Vibration	0.41 Grms from 3 to 500 Hz with spectral break points of 0.0005 G ₂ / Hz at 10 Hz and 200 Hz and 5 dB/octave roll off at each end
Thermal shock	-22°F (-30°C) 24 hours; 158°F (70°C) 24 hours
Charging time	<ul style="list-style-type: none"> • Battery only: 2–4 hours • Phone: set by the phone

Table 8: Safety and Compliance

Item	Description
Safety	<ul style="list-style-type: none"> • IEC 60950-1 • EN 60950-1 • UL 60950-1 • CSA C22.2 No. 60950-1 • AS/NZS 60950.1

Item	Description
Electromagnetic compatibility (EMC) and electromagnetic interference (EMI)	<ul style="list-style-type: none"> • FCC Part 15 (CFR 47) Class A • ICES-003 Class A • EN 55022 Class A • CISPR 22 Class A • AS/NZS CISPR22 • VCCI Class A • CSCR 24 • EN 55024 • EN 61000-3-2 • EN 61000-3-3 • EN 61000-4-2 • EN 61000-4-3 • EN 61000-4-4 • EN 61000-4-5 • EN 61000-4-6 • EN 61000-4-8 • EN 61000-4-11 • EN 61000-6-1 • EN 61000-63 • EN 60601-1-2

