

UltraMatrix Remote



Matrix KVM switch with integrated remote access over IP

- System-wide connectivity locally or over IP from any location worldwide
- Connects 1,000 computers to Multiple user stations
- High quality video up to 1280 x 1024
- Secure encrypted operation with login and computer access control
- PC only and Multi-Platform models available
- Multi-Platform design makes it compatible with PCs, Sun, UNIX, Linux, USB, and serial devices
- View 4 connections real time in the Quad screen mode

Features and Benefits

- Connect to remote computers locally or over IP
- Video resolution up to 1280 x 1024
- Security system with login, computer access control and data encryption. Two choices of encryption are available, 128 bit Blowfish or 64 bit triple DES
- Powerful and expandable to 1,000 computers.
- BIOS-level access control, local or remote
- Scaling, scrolling, auto-size, and quad screen features
- Pull-down menus allow you to easily switch to servers by location and name
- Single mouse cursor system allows easy switching between your local workstation and the remote computer
- Serial VT220 terminal emulation for access to UNIX hosts, routers, and other supported serial devices (Multi-Platform models)
- Multi-lingual menu (English, French, German, Spanish, Italian, and Portuguese)
- Status screen shows current connections, computer power, plus additional information
- Supports PS/2, PS/2 wheel, USB, and Sun
- Supports HV sync, composite sync, and sync-on-green video
- Serial access for computer switching, unit configuration, flash memory upgrades and reset to factory defaults
- Up to 4 local user and 4 remote user
- Free firmware upgrades for product enhancements and new software features available at www.rose.com
- Rack mount kits available in 19", 23", and 24" sizes
- Made in USA

The UltraMatrix™ Remote Advantage

The UltraMatrix Remote represents the next generation in KVM switches. It not only provides a comprehensive solution for remote server console access with Bios-level access control, this access can be local or from any workstation on your network over IP worldwide.

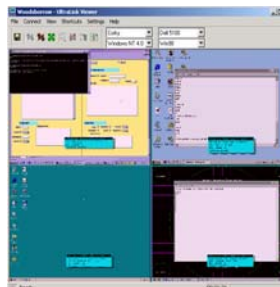
The powerful, advanced on-screen menu can be used to configure the unit, name the computers, and much more.

When accessing a computer over your network, the Viewer application receives and displays the video and sends back keyboard and mouse data. This process allows you to access the remote computers from anywhere, locally, across your network, or around the world.

The UltraMatrix Remote can easily be expanded to other KVM switches to make a seamless and truly scalable KVM matrix switch. Network communication technology is used to reduce cost, eliminate single points of failure, and increase reliability.

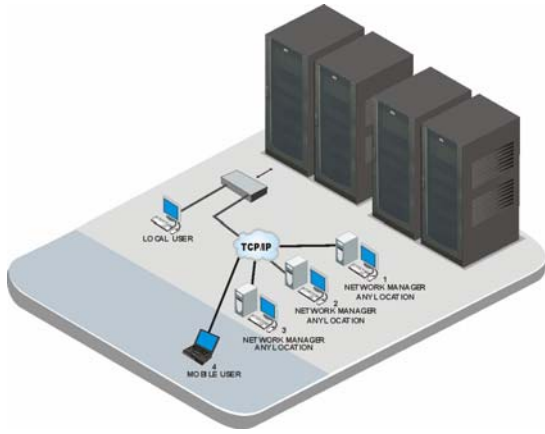
The Viewer program is designed to simplify access to the remote computers. Once connected you will see a crisp, clear, high-quality image of the remote computer. Your keyboard and mouse now control the remote computer.

The UltraMatrix Remote uses flash memory technology. Upgrades and product enhancements are easily done by obtaining unit specific firmware from our web site at www.rose.com.



Quad screen view

Typical Application



Access computers or servers over the network

Introduction The UltraMatrix Remote is a versatile and powerful product that extends the range of access to your computers from anywhere in the world. Its user friendly interface and powerful on-screen display makes managing your computers at the BIOS level control easier and more efficient. With the UltraMatrix Remote's expansion capability, the number of computers that can be remotely accessed is up to 1,000.

Models The UltraMatrix Remote is available in several different models. All models are fully expandable in multiple configurations giving up to 256 users stations access to as many as 1,000 computers.

Security System security can be configured to give access to multiple users, each with a unique user ID and password. Each user can be granted access to certain computers and restricted from others. There are four view modes that can be assigned to each user; view, share, control, and private. This gives the flexibility of allowing certain users full access or just view capabilities. All transmissions to and from the remote computer are encrypted for added security.

On-screen display The UltraMatrix Remote excels with its on-screen display (OSD) technology. The intuitive interface uses drop-down lists of computers to connect to and pop-up menus to configure the unit. User-friendly help lines explain each selected item. CPU names, security, appearance, screen saver and many other features are easily configured. You can use the OSD to connect to computers by name, view the system connections, and observe system status in real time. The interface can be programmed for English, French, German, Spanish, Italian, or Portuguese.

Installation The UltraMatrix Remote is easy to install and configure. The installation consists of two procedures, install the unit and install the Viewer software.

Operation The Viewer program is used to remotely access the computers or servers connected to the UltraMatrix Remote. You can connect to a computer using simple keyboard commands or an on-screen list of computers. Once a computer is selected and connected, the workstation can fully control, update, maintain and configure the computer or server.

Flash memory To support the latest devices and provide product enhancements and features, the UltraMatrix Remote contains flash memory. Free, lifetime firmware updates are available from our web site at www.rose.com.

Serial devices Any CPU port on the UltraMatrix remote can be configured to be serial. Once configured, the OSD is so powerful that when you switch to that CPU port it converts to a color VT220 terminal emulator for that port. When you connect to a serial device, you get a 24x80 screen with two status lines. You can access the serial device just as if you were connected with a terminal.

Keyboard and mouse The UltraMatrix Remote fully emulates the keyboard and mouse. You can use any combination of PS/2, USB, Sun, PS/2 wheel, and serial mice. USB (PC, Apple, and Sun) and serial mouse are for the computer side only, not the KVM side. It is compatible with all major operating systems such as Windows, Solaris, Linux, UNIX, SGI, and OSX.

Part Numbers

PC models	Remote Users*	Local Users	# of CPUs	Multi-Platform	Remote Users*	Local Users	# of CPUs
RP2-1R2X8U	1	2	8	RE2-1R2X8U	1	2	8
RP2-1R2X16U	1	2	16	RE2-1R2X16U	1	2	16
RP2-2R2X8U	2	2	8	RE2-2R2X8U	2	2	8
RP2-2R2X16U	2	2	16	RE2-2R2X16U	2	2	16
RP4-1R4X16U	1	4	16	RE4-1R4X16U	1	4	16
RP4-2R4X16U	2	4	16	RE4-2R4X16U	2	4	16
RP4-4R4X16U	4	4	16	RE4-4R4X16U	4	4	16

RM-UBnn Rackmount kit (1U chassis) nn= 19", 23", or 24"

RM-UCnn Rackmount kit (2U chassis) nn= 19", 23", or 24"

* One user, local or remote, per slot (same KVM port.)

/E P/N suffix = expansion card option - /E2 = 2 expansion cards

/ERJ P/N suffix = RJ expansion card option

/E2RJ = 2 RJ expansion cards

Specifications

Dimensions / Weight

#CPU ports	Width	Depth	Height	Weight
8	16.7" / 42.4cm	15.2" / 38.6cm	1.75" / 4.5cm	9.3lbs / 4.2kg
16	16.7" / 42.4cm	15.2" / 38.6cm	3.50" / 9.0cm	14.0lbs / 6.4kg

Power 90-240VAC - Auto switching, 130 Watts

Connectors Power - IEC320 standard receptacle

CPU/KVM - DB25F

Expansion - DB15M/F

RS232 - RJ12 (6-pin)

Network - RJ45

Video bandwidth 150MHz

Chassis Electro galvanized steel, black powder coated

Controls Power on/off switch

Indicators LEDs: Power, Select, CPU power

Environment 0 - 45 °C, 5% - 80% non-condensing RH

Approvals FCC, VCCI, UL, cUL, TUV, CE



Rear view (Top unit shown with optional expansion card installed)

■ Phone: 281-933-7673 ■ E-mail: sales@rose.com ■

10707 Stancliff Rd. Houston, TX 77099

Rose Electronics - Europe: +49 (0)2454 969442 Rose Electronics - Asia: +65 6324 2322

DS-UMR-2.1

© Copyright 2004 Rose Electronics. All rights reserved



WWW.ROSE.COM