

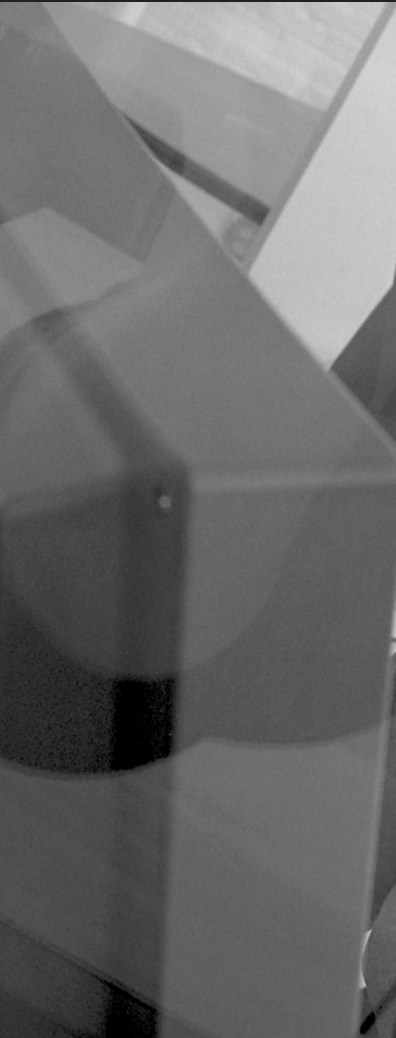


Avocent™

OutLook ES Series

Installer/User Guide

For models: 140ES 180ES 280ES 1160ES 2160ES 4160ES





INSTRUCTIONS

The exclamation point within an equilateral triangle is intended to alert the user to the presence of important operating and maintenance (servicing) instructions in the literature accompanying the appliance.



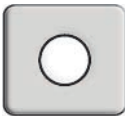
DANGEROUS VOLTAGE

The lightning flash with arrowhead symbol, within an equilateral triangle, is intended to alert the user to the presence of uninsulated “dangerous voltage” within the product’s enclosure that may be of sufficient magnitude to constitute a risk of electric shock to persons.



POWER ON

This symbol indicates the principal on/off switch is in the on position.



POWER OFF

This symbol indicates the principal on/off switch is in the off position.



PROTECTIVE GROUNDING TERMINAL

A terminal which must be connected to earth ground prior to making any other connections to the equipment.



• **OutLook ES Series**

Installer/User Guide

Avocent, the Avocent logo and “The Power of Being There” are trademarks of Avocent Corporation. OSCAR is a registered trademark of Apex Inc. All other marks are trademarks or registered trademarks of their respective owners.

© 2001 Avocent Corporation. All rights reserved.

USA Notification

Warning: Changes or modifications to this unit not expressly approved by the party responsible for compliance could void the user's authority to operate the equipment.

Note: This equipment has been tested and found to comply with the limits for a Class A digital device, pursuant to Part 15 of the FCC Rules. These limits are designed to provide reasonable protection against harmful interference when the equipment is operated in a commercial environment. This equipment generates, uses and can radiate radio frequency energy and, if not installed and used in accordance with the instruction manual, may cause harmful interference to radio communications. Operation of this equipment in a residential area is likely to cause harmful interference in which case the user will be required to correct the interference at his own expense.

Canadian Notification

This digital apparatus does not exceed the Class A limits for radio noise emissions from digital apparatus set out in the Radio Interference Regulations of the Canadian Department of Communications.

Le présent appareil numérique n'émet pas de bruits radioélectriques dépassant les limites applicables aux appareils numériques de la classe A prescrites dans le Règlement sur le brouillage radioélectrique édicté par le Ministère des Communications du Canada.

Japanese Notification

この装置は、情報処理装置等電波障害自主規制協議会（VCCI）の基準に基づくクラスA情報技術装置です。この装置を家庭環境で使用すると電波妨害を引き起こすことがあります。この場合には使用者が適切な対策を講ずるよう要求されることがあります。

Agency Approvals

UL 1950, CSA C22.2 No. 950, EN60950, IEC 60950
FCC part 15A, EN55022, EN55024

Table of Contents

Chapter 1: Product Overview

OutLook ES Features and Benefits 3

Safety Precautions 5

Chapter 2: Installation

Getting Started 9

Rack Mounting your OutLook ES Unit 9

Installing a 4- or 8-Port Switch 11

Installing a 16-Port Switch 13

Installing a Multiple Switch System 15

Powering up the OutLook Switch System 18

Chapter 3: Basic Operations

Viewing and Selecting Ports and Servers 21

OSCAR Navigation Basics 23

Setting up OSCAR 24

Using Snapshot 34

Resetting your Keyboard and Mouse 34

Displaying Version Information 35

Sending the Print Screen Keystroke 35

Chapter 4: Advanced Operations

Assigning Device Types 39

Accessing OSCAR at a Secondary Switch 40

Scan Behavior with a Multiuser Cascaded System . . . 40

Broadcasting to Cascaded Configurations 42

Appendices

Appendix A: FLASH Upgrades 47

Appendix B: Technical Specifications 48

Appendix C: Technical Support 49

Appendix D: Connecting the 280ES DC Switch 50

Appendix E: Troubleshooting 51



1

Product Overview

- ***Contents***

OutLook ES Features and Benefits 3

Safety Precautions 5



Chapter 1: Product Overview

OutLook ES Features and Benefits

Avocent's family of OutLook switches allows you to control up to 256 computers from one keyboard, monitor and mouse.

OutLook switches are available in single or multiuser versions and are easily customized to fit your particular network and operating system needs.

The OutLook switch system consists of the user station (your monitor, keyboard and mouse), the switch unit and the attached servers. You can attach additional, or secondary, switches to a primary switch (called cascading) to expand the OutLook system. This flexibility allows you to add capacity as your data center grows.

OSCAR graphic user interface

OutLook switches are equipped with OSCAR, our patented On-Screen Configuration and Activity Reporting interface. OSCAR features intuitive menus to configure your switch system and select computers. Computers can be identified by unique name or port number, allowing you to select server names that make sense to you. Point and click navigation with OSCAR allows for easy configuration and computer switching.

Multiplatform support

The OutLook ES series supports PS/2 and expands to support multiple platforms with adaptors for Apple, Sun, Unix, IBM RS/6000, HP 9000 and serial devices. Switch easily across platforms with OSCAR.

Security

Protect your system with a screen saver password. After a user-defined time, the screen saver mode will engage. Access is prohibited until the appropriate password is entered to reactivate the system.

Quality video support

The OutLook system supports analog VGA, SVGA and XGA video. The resolution you can achieve depends upon the length of cable separating your switch and servers. Achieve resolutions of up to 1600 x 1200 with a 7 foot cable and up to 800 x 600 with a 50 foot cable.

Plug and play

The OutLook system supports Display Data Channel Plug and Play, which automates configuration of the monitor and is compliant with the VESA DDC2B standard.

FLASH upgradable

The OutLook ES is FLASH upgradable. This allows you to update your firmware at any time through a simple serial connection to ensure that your OutLook system is always running the most current version available.

Built-in scanning capabilities

A built-in scanning feature allows you to automatically monitor, or scan, connected computers without intervention. When keyboard activity is detected, scanning is suspended until all activity stops. Scanning then resumes with the next server in sequence.

Cascading expansion

Each Outlook ES switch supports up to 16 directly attached servers, depending on the model. If more than 16 are needed, multiple units can be cascaded together with one unit designated as the primary switch and additional units connected to it as secondary switches. This extra cascade of units allows you to attach up to 256 servers in one system.

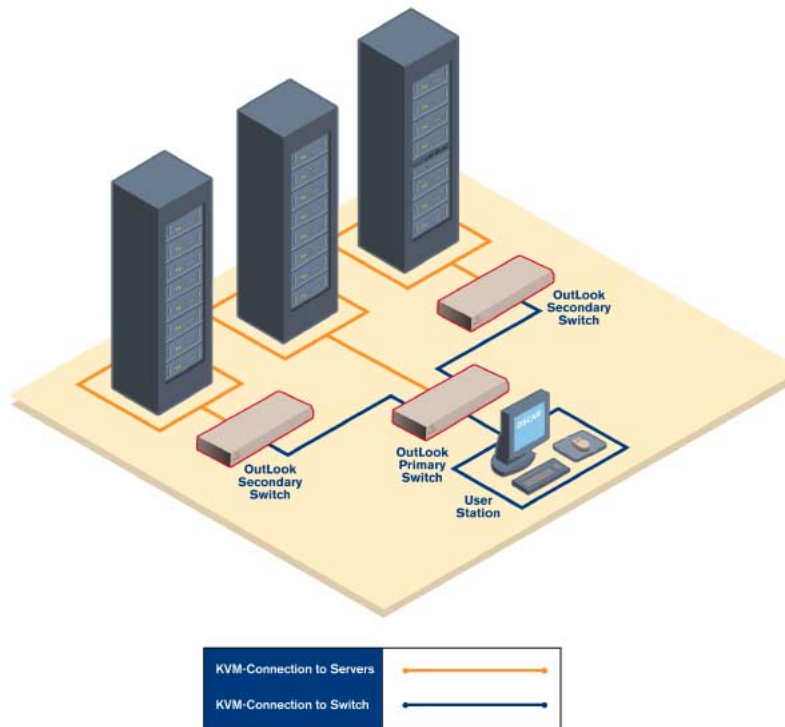


Figure 1.1: Example Outlook Configuration







	Number of servers	Number of users	Maximum number of cascaded servers
 <p>OutLook 140ES</p>	4	1	64
 <p>OutLook 180ES</p>	8	1	128
 <p>OutLook 280ES</p>	8	2	128
 <p>OutLook 1160ES</p>	16	1	256
 <p>OutLook 2160ES</p>	16	2	256
 <p>OutLook 4160ES</p>	16	4	256

Figure 1.2: OutLook ES Model Comparison

Safety Precautions

To avoid potential video and/or keyboard problems when using Avocent products:

- If the building has 3-phase AC power, ensure that the computer and monitor are on the same phase. For best results, they should be on the same circuit.
- Use only Avocent-supplied cable to connect computers and KVM switches. Avocent warranties do not apply to damage resulting from user-supplied cable.

To avoid potentially fatal shock hazard and possible damage to equipment, please observe the following precautions:

- Do not use a 2-wire extension cord in any Avocent product configuration.
- Test AC outlets at the computer and monitor for proper polarity and grounding.
- Use only with grounded outlets at both the computer and monitor. When using a backup power supply (UPS), power the computer, the monitor and the OutLook unit off the supply.



NOTE: The AC inlet is the main disconnect.

Rack mount safety considerations

- **Elevated Ambient Temperature:** If installed in a closed rack assembly, the operation temperature of the rack environment may be greater than room ambient. Use care not to exceed the rated maximum ambient temperature of the unit.
- **Reduced Air Flow:** Installation of the equipment in a rack should be such that the amount of airflow required for safe operation of the equipment is not compromised.
- **Mechanical Loading:** Mounting of the equipment in the rack should be such that a hazardous condition is not achieved due to uneven mechanical loading.
- **Circuit Overloading:** Consideration should be given to the connection of the equipment to the supply circuit and the effect that overloading of circuits might have on overcurrent protection and supply wiring. Consider equipment nameplate ratings for maximum current.
- **Reliable Earthing:** Reliable earthing of rack mounted equipment should be maintained. Pay particular attention to supply connections other than direct connections to the branch circuit (for example, use of power strips).



2

Installation

- *Contents*

<i>Getting Started</i>	9
<i>Rack Mounting your OutLook ES Unit</i>	9
<i>Installing a 4- or 8-Port Switch</i>	11
<i>Installing a 16-Port Switch</i>	13
<i>Installing a Multiple Switch System</i>	15
<i>Powering up the OutLook Switch System</i>	18



Chapter 2: Installation

Getting Started

Before installing your Outlook system, refer to the lists below to ensure that you have all the items that shipped with the Outlook as well as all other items necessary for proper installation.

Supplied with the Outlook

Your Outlook switch package contains the following items:

- Outlook ES unit
- Local country power cord
- Outlook ES Installer/User Guide
- Outlook Quick Install
- Download Instructions

Optional items

- 19 inch Switch Mounting Bracket Kit (available from Avocent)
- Serial cable, DB9 female, to update firmware
- Adaptors (available from Avocent)
 - To connect a PC computer that has a serial mouse—ELC-11KM
 - To connect a Macintosh computer with an ADB keyboard—ELC-12KM
 - To connect a Sun workstation—ELC-11ST
 - To connect a serial device—ELC-15TE
 - To connect a Sync-on-green video card (option for HP9000/RS6000 computers)—ELC-11RVA, ELC-11RVB

Rack Mounting your Outlook ES Unit

You can either place your switch on your desktop or rack mount your unit into an EIA standard rack.

Obtain a 19 inch Switch Mounting Bracket Kit (1U) to rack mount your Outlook. Before installing the switch and other components in the rack, stabilize the rack in a permanent location. Start rack mounting your equipment at the bottom of the rack, then work to the top. Avoid uneven loading or overloading of racks.



CAUTION Rack Loading: Overloading or uneven loading of racks may result in shelf or rack failure, causing damage to equipment and possible personal injury. Stabilize racks in a permanent location before loading begins. Mount components beginning at the bottom of the rack, then work to the top. Do not exceed your rack load rating.



CAUTION Power Considerations: Connect only to the power source specified on the unit. When multiple electrical components are installed in a rack, assure the total component power ratings do not exceed circuit capabilities. Overloaded power sources and extension cords present fire and shock hazards.

To install the switch mounting bracket:

1. Line up the holes in the “long side” of the kit’s side brackets with the screw holes in the switch.
2. With an Allen wrench, fasten the mounting brackets to the switch using two #8-32 button head socket cap screws on each side.
3. Attach the six rack nut/holders to the mounting rail of the rack so that the nut is positioned on the inside of the rack.
4. Mount the switch assembly to the rack by matching the holes in the “short side” of each bracket to an appropriate set of matching holes on your equipment rack, then inserting #10-32 Phillips screws through the slots in the bracket and the holes in the mounting rail and then into the rack/nut holders.

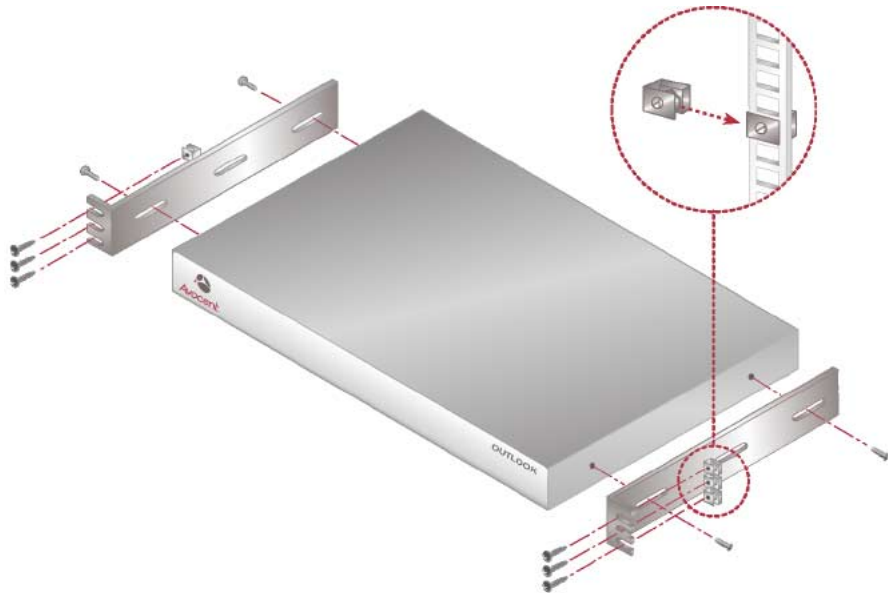


Figure 2.1: Rack Mounting Diagram

Installing a 4- or 8-Port Switch

(140ES, 180ES and 280ES models)

The diagram below illustrates one possible configuration for your 4- or 8-port switch. Follow the step-by-step instructions to properly install your new Outlook switch.

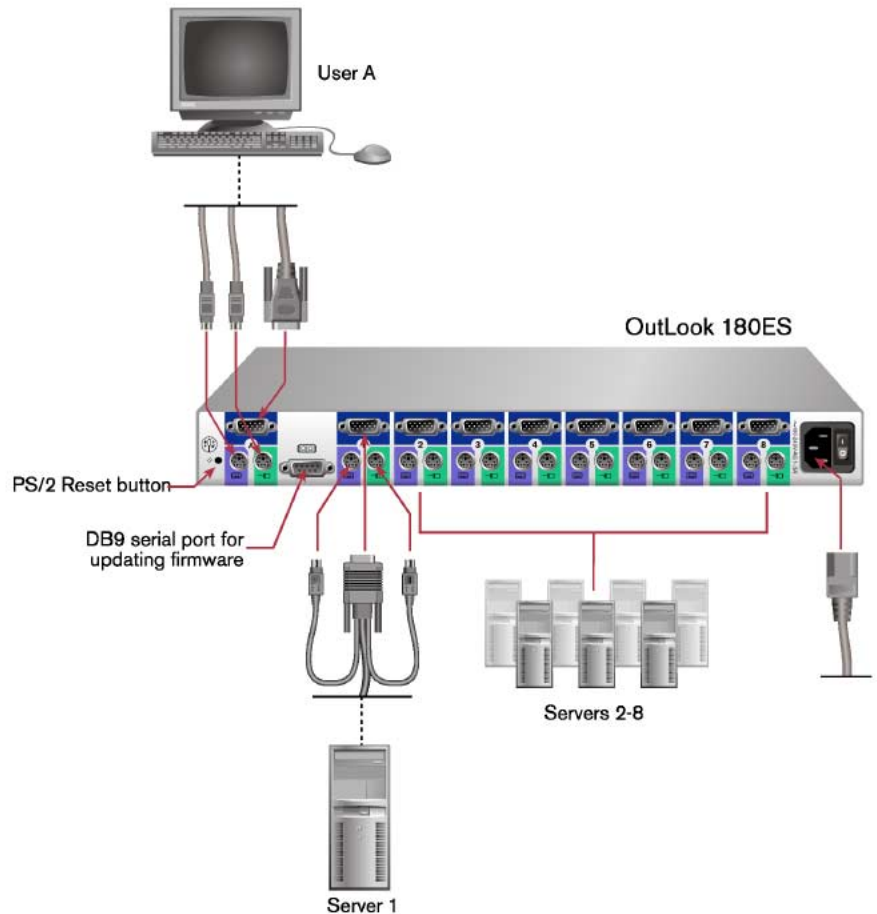


Figure 2.2: 8-Port Installation Example



WARNING: To reduce the risk of electric shock or damage to your equipment:

- Do not disable the power cord grounding plug. The grounding plug is an important safety feature.
- Plug the power cord into a grounded (earthed) outlet that is easily accessible at all times.
- Disconnect the power from the unit by unplugging the power cord from either the electrical outlet or the unit.

To install a 4- or 8-port switch:

1. Prepare the location for the switch. See *Rack Mounting your OutLook ES Unit* in this chapter if you are rack mounting the unit.
2. Select cables with appropriate connectors and length. (See *Appendix B* for cable specifications.)

NOTE: Cable length affects video quality as well as keyboard and mouse data timing. The maximum cable length is determined in part by the computer and peripherals used. Not all systems will give satisfactory results at the maximum length.

3. Connect the mouse, video and keyboard cables to the appropriate switch connectors. Note that all keyboard and mouse cables are 6-pin miniDIN PS/2 style and all the video cables are 15-pin VGA/SVGA style. (These connectors are located on the left rear of the switch unit, with additional connectors on the front of the OutLook 280 unit.)

NOTE: Keyboard and mouse connectors on the OutLook switch work with cables that have a locking mechanism. The cable lock prevents cables from becoming disconnected from the switch connectors due to the weight of the cable bundles or accidental tension from handling cables.

4. Select the computer that is to be connected to Port 1. Attach the computer's mouse to the appropriate connector on Port 1. Attach the computer's monitor to the 15-pin VGA connector. Attach the computer's keyboard to the appropriate connector. Bundle and label the cables for easy identification.
5. Repeat step 4 for all remaining computers to be connected to the switch unit.
6. Connect the power cord to the switch unit.

Installing a 16-Port Switch

(1160ES, 2160ES and 4160ES models)

The diagram below illustrates one possible configuration for your 16-port switch. Follow the step-by-step instructions to properly install your new Outlook switch.

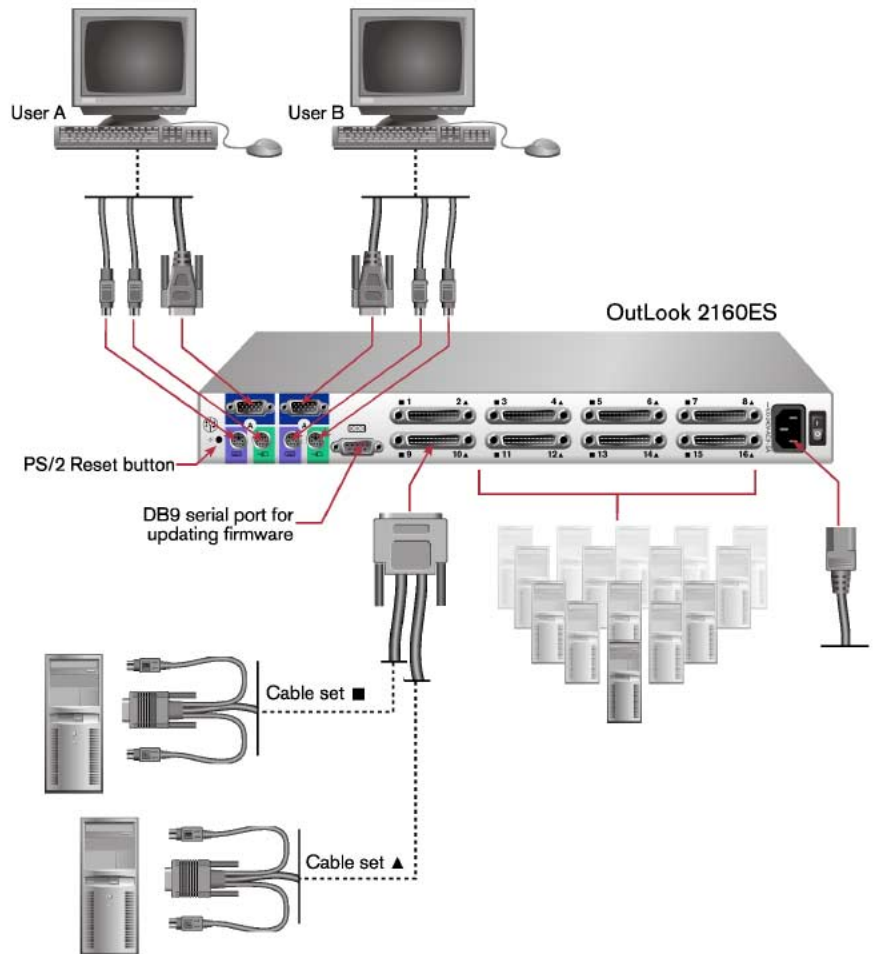


Figure 2.3: 16-Port Installation Example



WARNING: To reduce the risk of electric shock or damage to your equipment:

- Do not disable the power cord grounding plug. The grounding plug is an important safety feature.
- Plug the power cord into a grounded (earthed) outlet that is easily accessible at all times.
- Disconnect the power from the unit by unplugging the power cord from either the electrical outlet or the unit.

To install a 16-port switch:

1. Prepare the location for the switch. See *Rack Mounting your OutLook ES Unit* in this chapter if you are rack mounting the unit.
2. Select cables with appropriate connectors and length. (See *Appendix B* for specifications.) All 16-port switches require one high density 50-pin for every two computer cable sets of keyboard, video and mouse connectors.
3. Connect the high-density cable to the appropriate port on the back of the switch. You will note that each 50-pin connector is labeled with two numbers and symbols. The symbols help you determine the switch port number of the two keyboard, video and mouse cable sets.

NOTE: Cable length affects video quality as well as keyboard and mouse data timing. The maximum cable length is determined in part by the computer and peripherals used. Not all systems will give satisfactory results at the maximum length.

4. Select the two computers to be connected to the first port. Connect each computer's monitor to the 15-pin VGA connector. Connect each computer's keyboard and mouse to the appropriate connector. Bundle and label the cables for easy identification.
5. Repeat steps 3 and 4 for all remaining computers to be connected to the switch unit.
6. Connect the power cord to the switch unit.

Installing a Multiple Switch System

The following diagram illustrates one possible cascading configuration using your Outlook switch. Perform this installation if you want to add another switch to your existing system. Follow the step-by-step instructions to properly cascade your new Outlook switch.

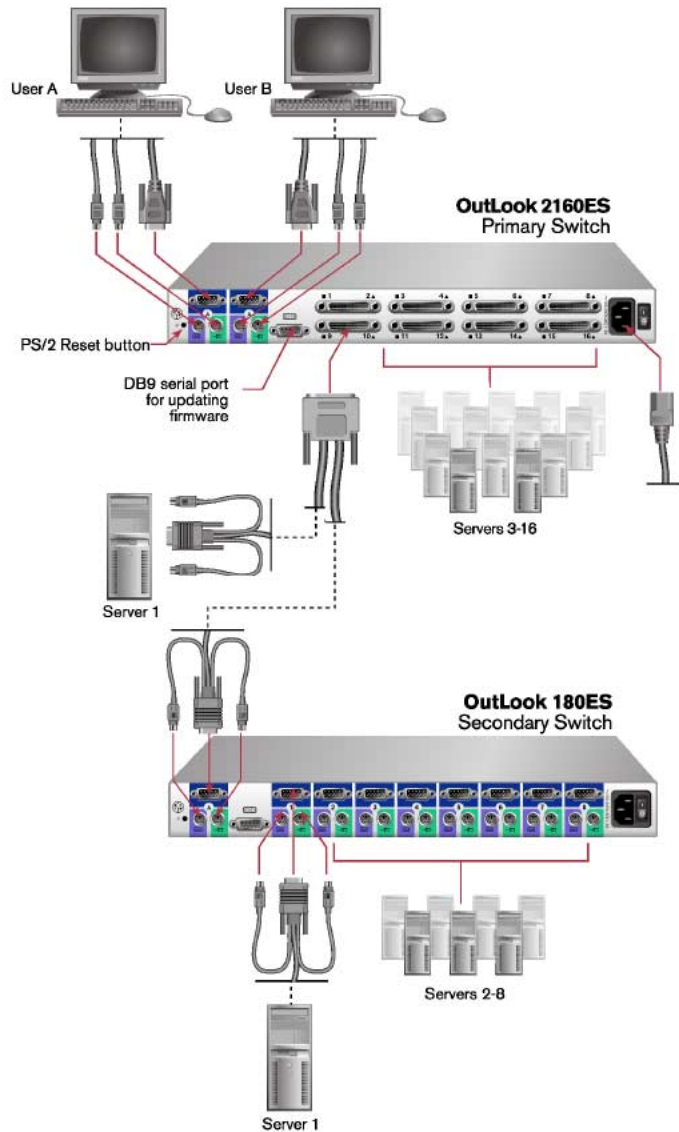


Figure 2.4: Multiple Switch Installation Example

Checklist of Steps for Adding a Secondary Switch

At the Primary Switch	At the Secondary Switch
	1. Select its location.
	2. Connect cables to station connections.
3. Connect cables to a port.	
	4. Plug in power cord.
	5. Power up switch.
6. Assign specific device types.	
	7. Connect servers.
	8. Power up servers.
	9. If switch was previously used as a primary device, then reset OSCAR defaults (optional).
10. Check status of secondary servers.	
11. Check mouse, keyboard and video functions.	
12. Perform Snapshot.	
	13. Perform Snapshot.
	14. Turn off Delay Time.

To add a secondary switch to an Outlook switch system:

1. Place the secondary switch in the desired location. Make sure the switch is turned off and unplugged.
2. Connect the video, mouse and keyboard interconnecting cables to the user port connections on the secondary switch.
3. Connect the video, mouse and keyboard cables (in this order) to the user port connections on the primary switch.
4. Plug the power cord into its socket on the secondary switch.
5. Power up the secondary switch.
6. At the primary switch, open OSCAR to assign a specific device type. This designation makes the primary switch aware of the secondary switch:
 - a. Press **Print Screen** to open the OSCAR Main dialog box.
 - b. Click *Setup - Devices - Device Modify*.
 - c. Click the port number that identifies the number of ports of the secondary switch: 4-port, 8-port, 10-port or 16-port.
 - d. Click *OK*.
7. Leave the power turned on to the secondary switch and connect the video, mouse and keyboard cables (in this order) from the servers to the switch port.
8. Power up the servers attached to the secondary switch.

9. If a secondary switch was previously used as a primary switch, reset OSCAR settings by doing the following:
 - a. At the primary switch, press **Print Screen** to open the Main dialog box. Select the port number of the secondary switch.
 - b. Press **Print Screen** again to gain access to the Main dialog box on the secondary switch.
 - c. Click *Setup - Devices*. Click *Defaults*, then click *OK*.
 - d. From the Setup dialog box, click *Names*. Click *Defaults*, then click *OK*.
 - e. From the Setup dialog box click *Flag*. Deselect *Displayed*, click *OK*.
 - f. Press **Escape** to exit OSCAR at the secondary switch.
10. At the primary switch, check the status symbols of the servers in the Main dialog box. If symbols are different from what is expected, see the *Status Symbols* section in *Appendix E*.
11. At the primary switch, check mouse and keyboard functions and video signals for each computer.
12. Perform the Snapshot procedure at the primary switch to save mouse and keyboard settings:
 - a. Press **Print Screen** to open the Main dialog box.
 - b. Click *Commands*, then click *Snapshot*.
 - c. Repeat steps a and b for additional primary switches.
13. Perform the Snapshot procedure at the secondary switch to save keyboard and mouse settings:
 - a. Press **Print Screen** to open the Main dialog box then select the port number of the secondary switch.
 - b. Press **Print Screen** again to gain access to OSCAR at the secondary switch.
 - c. Click *Commands*, then click *Snapshot*.
 - d. Press **Escape** to exit OSCAR from the secondary switch.
 - e. Repeat steps a - d for additional secondary switches.
14. Turn off Delay Time at the secondary switch (this prevents OSCAR from displaying at the secondary switch when selecting servers):
 - a. Press **Print Screen** to open the Main dialog box, then select the port number of the secondary switch.
 - b. Press **Print Screen** again to gain access to OSCAR at the secondary switch.
 - c. Click *Setup - Menu*.
 - d. Type **0** for Delay Time, then click *OK*.
 - e. Repeat steps a - d for additional secondary switches.
15. If all of the primary switches in the system show the correct port and server configuration and your mouse, keyboard and video function properly, your Outlook switch system is ready for operation.

NOTE: When connecting the video, mouse and keyboard cables from your servers to a running Outlook system, always *connect the keyboard cable last*. The switch detects the system power of the secondary switch or server through the keyboard cable. When the keyboard cable is connected last, the switch initializes both the keyboard and mouse interfaces to the system, allowing you to add a new switch without restarting your system.

Powering up the Outlook Switch System

The switch must be powered up before the attached servers since the switch stores mouse and keyboard connection and rate data for each server. The switch uses this information to initialize the keyboard and mouse interfaces of the servers. If the servers are turned on before the switch, the servers may exhibit abnormal or erratic behavior.

To power up the Outlook switch system:

1. Turn on the monitors.
2. Turn on the primary switch.
3. Turn on the servers attached to the primary switch.
4. Turn on the secondary switch (if applicable).
5. Turn on the servers attached to the secondary switch (if applicable).

Checking the Outlook switch system startup behavior

During system startup, check to see that your primary Outlook switch does the following:

- Lights the blue LED power indicator on the front of the switch (if applicable)
- Identifies the mouse and keyboard and sets their default states
- Displays copyright information about the Outlook switch and firmware
- Selects a port and displays its number in the status flag on the monitor

See the following table for the default port number that displays in the status flag on startup for each of the Outlook switch models.

Default Port Number Displayed in Status Flag

Outlook Model	User	Displays Port
140ES, 180ES, 1160ES	A	1
280ES, 2160ES	A	1
	B	2
4160ES	A	1
	B	2
	C	3
	D	4

If the copyright information and status flag do not appear, check that the monitor is connected and powered up.



3

Basic Operations

- *Contents*

<i>Viewing and Selecting Ports and Servers</i>	21
<i>OSCAR Navigation Basics</i>	23
<i>Setting up OSCAR</i>	24
<i>Using Snapshot</i>	34
<i>Resetting your Keyboard and Mouse</i>	34
<i>Displaying Version Information</i>	35
<i>Sending the Print Screen Keystroke</i>	35



Chapter 3: Basic Operations

Viewing and Selecting Ports and Servers

Use the Main dialog box to select, control and configure servers in your OutLook system.

To access the Main dialog box:

Press **Print Screen** to start OSCAR and gain access to the Main dialog box.

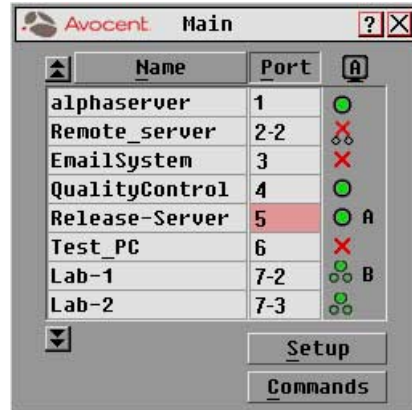


Figure 3.1: Main Dialog Box

Viewing the Status of your Switch System

The status of servers and switches in your system is indicated in the far right column of the Main dialog box. The following table describes the status symbols.

OSCAR Status Symbols

Symbol	Description
●	Server connected and powered up.
✗	Connected server is powered down or is not operating properly.
●●	Secondary switch connected and powered up.
✗	Secondary switch is powered down or is not operating properly.
A	On a multiuser switch, this letter corresponds to the lettered user port to which you are connected.
B	On a multiuser switch, this letter identifies the user currently connected to the server.

Selecting Servers

Use the Main dialog box to select servers. When you select a server, the Outlook switch reconfigures the keyboard and mouse to the settings for the selected server.

To select servers:

1. Double-click the server name or port number.

- or -

If the display order is by port, type the port number and press **Enter**.

- or -

If the display order is by name, type the first few letters of the name of the server to establish it as unique and press **Enter**.

To select the previous server:

Press **Print Screen** and then **Backspace**. This key combination toggles you between the previous and current connection.

To disengage from a server:

Press **Print Screen**, then **Alt+Ø**. This key combination leaves you in a free state with no server selected. The status flag on your desktop displays *Free*.

Soft Switching

After you press **Print Screen** to initially open OSCAR, you can select servers without displaying OSCAR. This is called a soft switch.

To configure servers for selecting without displaying OSCAR:

1. Click *Setup - Menu*.
2. For Delay Time, type the number of seconds of delay desired before the Main dialog box is displayed after **Print Screen** is pressed.
3. Click *OK*.

To select servers without displaying OSCAR:

1. To select another server, press **Print Screen**. If the display order of your server list is by port (*Port* button is depressed), type the port number and press **Enter**.
- or -
If the servers are in name order (*Name* button is depressed), type the first few letters of the name of the server to establish it as unique and press **Enter**. If the selection is performed before the Delay Time has expired, OSCAR does not display.
2. To switch back to the previous server, press **Print Screen** then **Backspace**.

OSCAR Navigation Basics

Use the following keystrokes to navigate through OSCAR.

This Keystroke	Does This
Print Screen	Opens OSCAR. (To print a screen, see <i>Sending the Print Screen Keystroke</i> in Chapter 3.)
F1	Opens the Help screen for the current dialog box.
Escape	Closes the current dialog box without saving changes and returns to the previous one. In Main dialog box, it closes OSCAR and returns to the selected server. In a message box, it closes the pop-up box and returns to the current dialog box.
Alt+X	Closes current dialog box and returns to previous one.
Alt+O	Selects the <i>OK</i> button, then returns to the previous dialog box.
Enter	Completes the switch operation in Main dialog box and exits OSCAR. In a message box, it closes the pop-up box and returns to the current dialog box.
Single-click, Enter	In a text box, it selects the text for editing and enables the left and right arrow keys to move the cursor. Press Enter again to quit the edit mode.
Print Screen , Alt+Ø	Immediately disengages user from a server. Status Flag displays <i>Free</i> .
Print Screen , Pause	Immediately turns on screen saver mode and prevents access to that particular station if it is password protected.
Up/Down Arrows	Moves the cursor from line to line in lists.
Right/Left Arrows	Moves the cursor between columns. When editing a text box, these keys move the cursor within the column.
Page Up/Down	Pages up and down through Name and Port lists.
Home/End	Moves the cursor to the top or bottom of a list.
Shift+Del	Deletes from current selection to all lines below it when editing a scan list.
Insert	In the Scan dialog box, inserts the first server listed in the Main dialog box. In the Name dialog box, inserts a character space.
Alt+Down Arrow	In the Scan dialog box in the Name, Port or Sec columns, moves the cursor down through the list of servers.
Alt+Up Arrow	In the Scan dialog box in the Name, Port or Sec columns, moves the cursor up through the list of servers.
Alt+Home	In the Scan dialog box in the Name, Port or Sec columns, moves cursor to the first server listed in the Main dialog box.
Alt+End	In the Scan dialog box in the Name, Port or Sec columns, moves cursor to the last server listed in the Main dialog box.
Caps Lock	Disabled. (Use the Shift key to change case.)

Setting up OSCAR

You can configure your Outlook system from the Setup dialog box. Use the Scan, Menu, Flag, Security and Broadcast options to manage routine tasks for your servers. Use the Devices and Names options when initially setting up your switch system to assign device types and to identify servers by unique names.

To access the Setup dialog box:

1. Press **Print Screen**. The Main dialog box appears.
2. Click *Setup* in the Main dialog box. The Setup dialog box appears.



Figure 3.2: Setup Dialog Box

Setup Features

Scan	Set up a custom scan pattern.
Menu	Change the server listing between numerically by port and alphabetically by name. Change the Delay Time before the Main dialog box displays after pressing Print Screen .
Flag	Change display, timing, color or location of the status flag.
Security	Set passwords to restrict server access and enable the screen saver.
Broadcast	Simultaneously control multiple servers through keyboard and mouse actions.
Devices	Identify device types attached to your switch, including servers and other switches.
Names	Identify servers by unique names.

Assigning Server Names

Use the Names dialog box to identify servers by a unique name that makes sense to you and reset names back to the default settings.

To access the Names dialog box:

1. Press **Print Screen**. The Main dialog box will appear.
2. Click *Setup - Names*. The Names dialog box appears.



Figure 3.3: Names Dialog Box

To assign names to servers:

1. Double-click or press **Enter** to select the text in the Name box. Type a name. Names of servers may be up to 15 characters long. Legal characters include: A-Z, a-z, 0-9 and (space). Press **Backspace** or **Delete** to delete an incorrect entry. Press the **Arrow** keys to move the cursor in the Name box. Press **Insert** or the **Space Bar** to insert a character space.
2. Repeat step 1 for each server in the system.
3. Click *OK* to save the names.
 - or -
 - Click *Defaults* then click *OK* to restore default settings.
 - or -
 - Click *X* or press **Escape** to exit the dialog box without saving changes.

To list servers alphabetically by name:

Press **Alt+N** or click *Name* in the Main dialog box.

NOTE: Before you can assign names to servers attached to secondary switches, you must first make the primary switch aware of the secondary switch. See *Assigning Device Types* in Chapter 4.

Changing the Display Behavior

Use the Menu dialog box to change the server display order, set the Delay Time for OSCAR after pressing **Print Screen** and change the switch connection mode.

To access the Menu dialog box:

1. Press **Print Screen**. The Main dialog box will appear.
2. Click *Setup - Menu*. The Setup dialog box appears.



Figure 3.4: Menu Dialog Box

To choose the display order of servers in the Main dialog box:

1. Click *Name* to display servers alphabetically by name or click *Port* to display servers numerically by port number.
2. Click *OK*.

To set a Delay Time for OSCAR:

1. Type in the number of seconds you want to delay display of OSCAR after you press **Print Screen**.
2. Click *OK*.

Setting a display Delay Time for OSCAR allows you to complete a soft switch without OSCAR displaying. For more information, see *Soft Switching* in this chapter.

To set the switch mode:

1. Select the type of switching mode you desire:
Cooperative (default setting) to have the Outlook maintain the current user connection; the current user won't be disconnected if another user requests connection.

- or -

Preemptive to have the OutLook allow any user to select any server at any time; a request from another user disconnects the current user.

2. Click *OK*.

Setting up a Scan Pattern

In scan mode, the switch automatically scans from port to port (server to server). Each user can scan the entire system sequentially or designate a custom scan pattern by specifying servers and durations.

To access the Scan dialog box:

1. Press **Print Screen**. The Main dialog box will appear.
2. Click *Setup* in the Main dialog box. The Setup dialog box appears.
3. Click *Scan* in the Setup dialog box. The Scan dialog box appears.

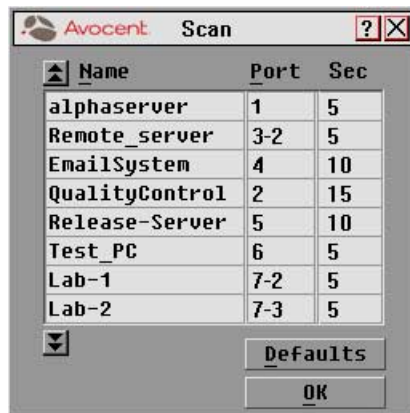


Figure 3.5: Scan Dialog Box

To scan all servers in the system:

1. Click *Defaults* in the Scan dialog box.
2. In the Sec column, type the number of seconds (from 1 to 99) of desired Delay Time before the scan moves to the next server in the sequence.
3. Move the cursor to the next line or press the **Down Arrow** and repeat step 2 for each server.
4. Click *OK*.
5. From the Commands menu, select Scan Enabled to start the scan mode.

To remove a server from the scan list:

1. In the Scan dialog box, click the server to be removed.
2. Press **Delete**.
– or –
Press **Shift+Delete** to remove the selected server and all entries below it.
3. Click *OK*.

To set up a custom scan pattern:

1. In the Scan dialog box, type the name or port number of the server you want to scan.
– or –
On the first line, press **Insert**; the first server listed in the Main dialog box appears. To select the server to include in your scan pattern, use the following keyboard commands in the Name, Port or Sec column:
 - a Press **Alt+Down Arrow** to move the cursor down the list of servers.
 - b Press **Alt+Up Arrow** to move the cursor up the list of servers.
 - c Press **Alt+Home** to move the cursor to the first server listed.
 - d Press **Alt+End** to move the cursor to the last server listed.
2. In the Sec column, type the number of seconds (from 1 to 99) of desired Delay Time before the scan moves to the next server in the sequence.
3. Move the cursor to the next line or press the **Down Arrow** and repeat steps 1 and 2 for each of the remaining servers to be included in the scan pattern.
4. Click *OK*.

NOTE: If you later remove a server from the list in the Device Modify dialog box, this change may affect a custom scan pattern.

To start the scan mode:

Select Scan Enabled in the Commands menu.

To cancel scan mode:

Clear Scan Enabled in the Commands menu if OSCAR is open.

– or –

Select a server if OSCAR is open.




– or –

Move the mouse or press any key on the keyboard if OSCAR is not open. Scan will stop at the currently selected server.

Controlling the Status Flag

The status flag displays on your desktop and shows the name or port number of the selected server or the status of a particular port. Use the Flag dialog box to display the flag by port number or by server name, limit the time the flag displays, change the flag color, make the flag transparent or opaque and change the flag's location on the desktop.

Status Flag Examples

Flag	Flag Description
	Flag type is by name.
	Flag type is by port number.
	Flag shows broadcast mode is activated.

To access the Flag dialog box:

1. Press **Print Screen**. The Main dialog box will appear.
2. Click *Setup - Flag*. The Flag dialog box appears.

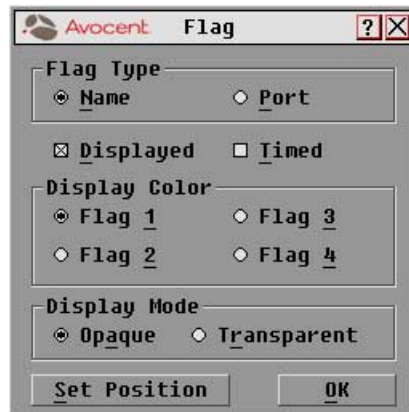


Figure 3.6: Flag Dialog Box

To determine how the status flag is displayed:

1. Select Name to display the server by name or select Port to display by port.
2. Select Displayed to show the flag all the time or select Timed to display the flag for only 5 seconds after switching.
3. Select a flag color in Display Color.
4. In Display Mode, select Opaque for a solid color flag or select Transparent to see the desktop through the flag.

5. To position the status flag on the desktop:
 - a. Click *Set Position* to gain access to the Position Flag screen.



Figure 3.7: Position Flag

- b. Left click on the title bar and drag to the desired location.
 - c. Right click to return to the Flag dialog box.

NOTE: Changes made to the flag position are not saved until you click *OK* in the Flag dialog box.

6. Click *OK* to save settings or click *X* to exit without saving changes.

Setting User Console Security

Use the Security dialog box to set security on your user station. You can establish a screen saver mode that engages after your station remains inactive for a user-specified time. Once engaged, your station will remain locked until you press any key or move the mouse. You will then need to type in your password to log back in to the system.

To access the Security dialog box:

1. Press **Print Screen**. The Main dialog box will appear.
2. Click *Setup - Security*. The Security dialog box appears.



Figure 3.8: Security Dialog Box

To set or change the password:

1. Single-click and press **Enter** or double-click in the New text box.
2. Type the new password in the New text box and press **Enter**.

Passwords can be up to 12 characters long and are case sensitive. Legal characters are: A-Z, a-z, 0-9 and (space).

3. In the Repeat box, type the password again and press **Enter**.
4. Click *OK*.

To password protect your user station:

1. Set your password as described in the previous procedure.
2. Select Enable Screen Saver.
3. Type the number of minutes for Delay Time (from 1 to 99) to delay activation of password protection and the screen saver feature.
4. For Mode, select Energy if your monitor is EnergyStar compliant; otherwise select Screen.



CAUTION: Monitor damage can result from the use of Energy Mode with monitors not compliant with EnergyStar.

5. (Optional) Click *Test* to activate the screen saver test that lasts 10 seconds then returns you to the Security dialog box.
6. Click *OK*.

To log in to your user station:

1. Press any key on the keyboard or move your mouse. The Password dialog box appears. Type your password and then click *OK*.
2. Press **Print Screen** to start OSCAR.

To remove password protection from your user station:

1. From the Main dialog box, click *Setup - Security*. The Password dialog box appears. Type your password and then click *OK*.
2. In the Security dialog box, single-click and press **Enter** or double-click in the New box. Leave the box blank. Press **Enter**.
3. Single-click and press **Enter** or double-click in the Repeat box. Leave the box blank. Press **Enter**.
4. Click *OK*.



To enable the screen saver mode with no password protection:

1. If your station is password protected, perform the previous procedure first.
2. Now select Enable Screen Saver.
3. Type the number of minutes for Delay Time (from 1 to 99) that you want to delay activation of the screen saver.
4. Choose Energy if your monitor is EnergyStar compliant; otherwise you should select Screen.

CAUTION: Monitor damage can result from the use of Energy Mode with monitors not compliant with EnergyStar.

5. (Optional) Click Test to activate the screen saver test, which lasts 10 seconds, then returns you to the Security dialog box.
6. Click *OK*.

NOTE: Activation of the screen saver mode disconnects the user from a server. The status flag displays *Free*.

To exit the screen saver mode:

Press any key or move your mouse. The Main dialog box appears.

To turn off the screen saver:

1. In the Security dialog box, clear Enable Screen Saver.
2. Click *OK*.

To immediately turn on the screen saver:

Press **Print Screen**, then press **Pause**. This command only works when you are connected to a server.

Broadcasting to Servers

Use Broadcast to simultaneously control more than one server in a system. This feature is useful when you want to ensure that all selected servers receive identical input. For each server receiving the broadcast, you can choose to broadcast keystrokes and/or mouse movements independently. In a cascaded system, you can broadcast to any combination of servers in the entire system.

To access the Broadcast dialog box:

1. Press **Print Screen**. The Main dialog box will appear.
2. Click *Setup - Broadcast*. The Broadcast dialog box appears.



Figure 3.9: Broadcast Dialog Box

NOTE: Broadcasting Keystrokes - The keyboard state must be identical for all servers receiving a broadcast to interpret keystrokes identically. Specifically, the **Caps Lock** and **Num Lock** modes must be the same on all keyboards. While the switch attempts to send keystrokes to the selected servers simultaneously, some servers may inhibit and thereby delay the transmission.

NOTE: Broadcasting Mouse Movements - For the mouse to work accurately, all systems must have identical mouse drivers, desktops (such as identically placed icons) and video resolutions. In addition, the mouse must be in exactly the same place on all screens. Because these conditions are extremely difficult to achieve, broadcasting mouse movements to multiple systems may have unpredictable results.

To broadcast to selected servers:

1. Select the mouse and keyboard checkboxes for the servers that are to receive the broadcast commands.
– or –
Press the **Up Arrow** or **Down Arrow** keys to move the cursor to the server that is to receive the broadcast command. Then press **Alt+K** to select the keyboard checkbox and/or **Alt+M** to select the mouse checkbox. Repeat for additional servers.
2. Click *OK* to save the settings.
3. From the Commands menu, select the Broadcast Active checkbox to activate broadcasting.

NOTE: If using a multiuser switch, only one user may select Broadcast Active.

4. From the user station, type the information and/or perform the mouse movements you want to broadcast.

To turn broadcasting on or off:

From the Commands menu, click to enable or disable the Broadcast Active checkbox.

Using Snapshot

Snapshot saves the keyboard and mouse information of the servers that are powered up. The OutLook switch uses this information to initialize the keyboard and mouse interfaces of the servers. If power is turned off to the switch before you perform the Snapshot procedure, then you must restart each server to reestablish keyboard and mouse communication with the switch. Perform Snapshot after you install the switch system, add servers to the system or change the mouse or keyboard.

How Snapshot works with power outages:

If you have performed Snapshot, once power is restored after a power outage, OutLook switches automatically restore the keyboard and mouse settings of each server. If you use an uninterrupted power supply, connect the switches to the same source as the rest of the system.

To save keyboard and mouse settings:

1. Power up the servers for which you want to save settings.
2. From the Commands menu, click *Snapshot*.
3. A message box displays identifying that the keyboard and mouse settings have been saved.
4. Click *X* to close the message box.

Resetting your Keyboard and Mouse

If a keyboard or mouse locks up, you may be able to reestablish operation of these peripherals by issuing a reset command. The reset command sends a hot-plug sequence to the server. The hot-plug sequence to a plug and play server causes the mouse and keyboard settings to be sent to the OutLook. With communication reestablished, functionality is restored to you.

To reset the mouse and keyboard values:

1. From the Commands menu, click *Reset*.
2. A message box displays indicating that the mouse and keyboard have been reset. Click *X* to close the message box.

NOTE: If you cannot access the Commands menu to perform the reset procedure, press the Reset button on the back panel of the switch.

Displaying Version Information

Use the Version dialog box to display the version number of the firmware as well as keyboard and mouse information for the currently selected server.

This information facilitates system troubleshooting and support. For optimum performance, keep your firmware current.

To display version information:

1. Click *Version* in the Commands dialog box. The Version dialog box appears.
2. Click *X* to close the Version dialog box.

Sending the Print Screen Keystroke

The **Print Screen** key has many functions in the OSCAR environment. Refer to the chart below to be properly access the feature you need.

Press Print Screen

This Many Times	To Do This
OutLook switch as a stand-alone switch	
1	Open OSCAR.
2	Send the Print Screen keystroke to the currently selected device.
OutLook switch connected to another Avocent switch	
1	Open OSCAR at the primary switch.
2	Open OSCAR at the selected secondary switch.
3	Bring both OSCAR menus up on the monitor at the same time.
4	Send the Print Screen keystroke to the currently selected device.

4

Advanced Operations

- ***Contents***

<i>Assigning Device Types</i>	39
<i>Accessing OSCAR at a Secondary Switch</i>	40
<i>Scan Behavior with a</i> <i>Multiuser Cascaded System</i>	40
<i>Broadcasting to Cascaded Configurations</i>	42



Chapter 4: Advanced Operations

Assigning Device Types

Use the Devices dialog box to assign device types to either make your primary switch aware of a secondary switch or to delete a device from the Main dialog box.

To access the Devices dialog box:

1. Press **Print Screen**. The Main dialog box will appear.
2. Click *Setup - Devices*. The Devices dialog box appears.



Figure 4.1: Devices Dialog Box

After you assign a device type to a secondary switch, the port numbering changes. In the above example, Port 2-1 is a secondary port. The 2 indicates the port number on the primary switch and 1 is the port number on the secondary switch.

To assign a device type:

1. In the Devices dialog box, select the port number.
2. Click *Modify*. The Device Modify dialog box appears.



Figure 4.2: Device Modify Dialog Box

3. Choose one from the following:
 - No Device: If no switch or server is attached and you want to delete it from the list of devices in the Main dialog box
 - Computer: If a server is attached (default setting)
 - Port number: If a secondary switch is attached, select the number of ports it has.
4. Click *OK*.
5. Repeat steps 2–4 for each port you want to assign a device type.
6. Click *OK* in the Devices dialog box to save settings.
 - or –
 - Click *Defaults* then *OK* to restore settings.

Accessing OSCAR at a Secondary Switch

With cascaded configurations, you specify settings at the primary switch. All naming, scanning, status flag attributes, OSCAR attributes, device settings and passwords must be set at the primary switch.

You will access OSCAR at the secondary switch to set up broadcasting, add another level of security in cascaded configurations or use Snapshot to save the secondary mouse and keyboard settings. You'll also access the secondary OSCAR for firmware version information or to reset the secondary mouse and keyboard.

You should only change two settings in OSCAR on a secondary switch because adjustments can cause conflicts between the secondary and primary switches. Specifically, ensure that your secondary switch is set to Port Order view and Preemptive mode. All other settings should be set to the default factory settings.

To open OSCAR at a secondary switch:

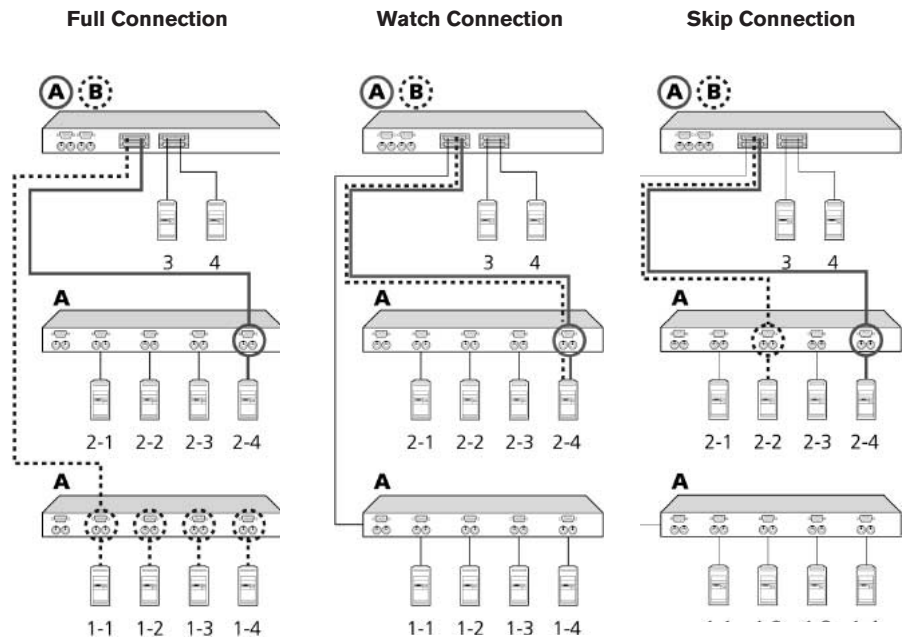
1. Press **Print Screen** to open the Main dialog box at the primary switch.
2. Double-click the number of the cascaded port to be accessed.
 - or –
 - Select the cascaded port and press **Print Screen** again to display OSCAR at the secondary switch.

Scan Behavior with a Multiuser Cascaded System

With a multiuser switch, scan behavior is influenced by multiple users and cascaded switches. A multiuser switch in the primary position and any single-user switch in the secondary position creates a situation that can change the scan pattern. The scan behavior modes are described in the following chart with three examples to better illustrate scan behavior.

Scan Mode	Behavior
Full Connection	User has keyboard and mouse control.
Watch Connection	User sees video only; has no keyboard or mouse control.
Skip Connection	User cannot select the server because access is unavailable. Either the port connection is in use or the power is turned off to the port.

Scan Behavior Examples



Example 1: User A is accessing server 2-4. User B wants to scan servers on the secondary switch at Port 1 of the primary switch.

Behavior: Any keyboard stroke or mouse click by User B will stop the scanning and pass the keystrokes or mouse movements to the currently selected server.

Example 2: User A is accessing server 2-4. User B wants to scan server 2-4.

Behavior: Activities of User A can be monitored but keyboard strokes or mouse movements by User B cannot be passed on to server 2-4.

Example 3: User A is accessing server 2-4. User B wants to scan server 2-2.

Behavior: Since User A occupies the primary port connection at Port 2, server 2-2 is unavailable to User B.

Broadcasting to Cascaded Configurations

Broadcasting to a cascaded configuration requires special consideration at both the primary and secondary switches. Follow these step-by-step instructions to properly configure your system for cascaded broadcasting.

To set up servers attached to secondary switches:

1. From the Main dialog box at the primary switch, click to select the port number or server name of the secondary switch to which you want to broadcast; press **Print Screen** to display OSCAR for the secondary switch.
2. Click *Setup - Broadcast*.
3. From the Broadcast dialog box, select the keyboard and mouse checkboxes for each server that is to receive keystrokes and/or mouse movements.



Figure 4.3: Broadcast Dialog Box

4. Click *OK* to save settings.
5. From the Commands menu, click the Broadcast Active checkbox to activate the broadcast mode for the secondary switch.
6. Press **Print Screen** to open OSCAR at the primary switch.
7. Repeat steps 1 - 5 to send broadcast commands to the servers attached to additional secondary switches.

To set up servers attached to primary switches:

1. From the Main dialog box at the primary switch, click *Setup - Broadcast*.
2. From the Broadcast dialog box, select the keyboard and mouse checkboxes for each server that is to receive keystrokes and/or mouse movements.
3. Click *OK* to save settings.

4. From the Commands menu, click the Broadcast Active checkbox to activate the broadcast mode for the primary switch.
5. From a user station attached to the primary switch and connected to the secondary switch, type the information and/or select the mouse movements you want to broadcast.

NOTE: Once you exit OSCAR, broadcasting is activated and any keystrokes or mouse movements will be active.

To turn off broadcast mode for a cascaded configuration:

1. From the Commands menu at the primary switch, clear the Broadcast Active checkbox.
2. In the Main dialog box at the primary switch, click to select the port number or name of the secondary switch to which you want to stop broadcasting commands. Press **Print Screen** to display OSCAR at the secondary switch.
3. Click *Commands*.
4. From the Commands menu, clear the Broadcast Active checkbox.



Appendices

- *Contents*

<i>Appendix A: FLASH Upgrades</i>	47
<i>Appendix B: Technical Specifications</i>	48
<i>Appendix C: Technical Support</i>	49
<i>Appendix D: Connecting the 280ES</i>	
<i>DC Switch</i>	50
<i>Appendix E: Troubleshooting</i>	51



Appendices

Appendix A: FLASH Upgrades

OutLook Firmware Upgrade Instructions

You can update the firmware of your OutLook switch by using a special update utility provided by Avocent. This utility automatically configures the port communications settings to allow direct downloading from the connected server.

To update your firmware, you need the following items:

- Computer running Windows NT, Windows 95, Windows 98 or Windows 2000
- Available serial port (COM port) on the server
- Standard serial cable (DB-male) that connects the switch and the server
- Firmware update

To update firmware:

1. Connect the standard serial cable to a COM port on the server and to the serial connector on the back panel of the switch. Make a note of which COM port you have chosen, then turn on the switch.
2. Go to <http://www.avocent.com/support> and click on Downloads to access the firmware update file. Once the download is complete, navigate to the drive where you have saved the firmware update and unzip the file.
3. Double-click to run the file WUpDate.exe.
4. In the dialog box that displays, select the desired language and COM port.
5. Click *Load*.
6. Once the firmware is updated, the following message displays: Download complete. Click *Done* to exit the dialog box.
7. The switch automatically reboots after the update is completed.

Possible error conditions

If the download does not execute properly, verify the following:

- Verify that the COM port is correct.
- Verify that no other program is currently using the COM port, or that a previous DOS window/shell is open that had used the desired COM port.
- Verify that no other copies of the WUpDate utility are currently running.
- Verify that a straight through (1-to-1) type of serial cable is used, not a null modem serial cable.
- Verify in the selected COM port's Advanced Port settings that the FIFO buffers are selected and that the receive buffer is set to High.



WARNING: While upgrading, do not use your computer for anything else or switch between windows. Close all other windows if necessary. If the update was unsuccessful (such as during a power outage), repeat the procedure.

Appendix B: Technical Specifications

Product Specifications

Dimensions

Model	140ES, 180ES, 280ES, 1160ES, 2160ES, 4160ES	
Height	1.75 in	(4.5 cm)
Depth	8.00 in	(20.3 cm)
Width	17.00 in	(43.2 cm)
Weight		
140ES	5.25 lb	(2.38 kg)
180ES	5.25 lb	(2.38 kg)
280ES	5.70 lb	(2.60 kg)
1160ES	5.70 lb	(2.60 kg)
2160ES	5.70 lb	(2.60 kg)
4160ES	5.70 lb	(2.60 kg)

Input Power Requirements

Rated Voltage	100 – 240VAC	
Rated Frequency	50 – 60 Hz	
Rated Input Current	1.0A Max	

Temperature Range

Maximum Ambient Operating	32° – 104° F	(0° – 40° C)
Ambient Storage and Shipping	- 40° – 185° F	(- 40° – 85° C)
Maximum Internal Rack	104° F	(40° C)

Relative Humidity

Operating	20% – 80%	
Non-operating	5% – 90%	
Video Modes Supported	VGA, SVGA, XGA	

Maximum Cable Lengths

Console to switch	18 ft - If you need more than 18 feet, use LongView, Avocent's long-line driver.	
Computer to switch	7 ft	1600 x 1200 dpi
	12 ft	1280 x 1024 dpi
	25 ft	1024 x 768 dpi
	50 ft	800 x 600 dpi
Switch to switch	25 ft	

Appendix C: Technical Support

Our Technical Support staff is ready to assist you with any installation or operating issues you encounter with your Avocent product. If an issue should develop, follow the steps below for the fastest possible service:

1. Check the pertinent section of the manual to see if the issue can be resolved by following the procedures outlined.
2. Check our web site at www.avocent.com/support to search the knowledge base or use the on-line service request.
3. Call Avocent Technical Support for assistance at (888) 793-8763. Visit the Avocent web site at <http://www.avocent.com/support> and click on Getting Support for current phone support hours.

Appendix D: Connecting the 280ES DC Switch

Use only #18 AWG stranded wire UL 1007 or UL 1015. The maximum length should not exceed 10 meters (32.8 feet).

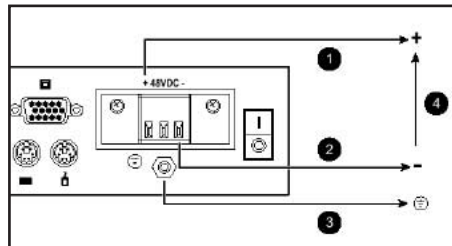


WARNING: Always disconnect power before changing any wiring. To reduce the risk of electric shock or damage to the equipment, this product must be installed in accordance with the following guidelines.

This product is intended to be connected to a DC power source that can be classified as a secondary circuit in accordance with applicable national requirements for Information Technology Equipment. Generally, these requirements are based on the International Standard for Safety for Information Technology Equipment, IEC 950. The source must have one pole (Neutral/Return) referenced to earth ground in accordance with local/regional electric codes and/or regulations.

This product is intended to be installed only in areas that comply with ETSI-300-132-2.

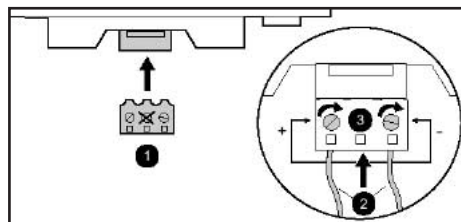
This product must be connected to a power distribution device that provides a means for disconnecting power from the branch supply circuit. The power distribution device must be provided with an overcurrent protective device suitable for interrupting faulty currents available from the main source and rated no more than .3 AMPS at the distribution device. The green/yellow lead of the power cable assembly must be connected to a suitable ground/earth terminal on the power distribution unit. Do not rely on the rack or rack chassis to provide adequate ground/earth continuity.



1. Red wire
2. Black wire
3. Green/Yellow striped wire
Use chassis ground connection only.
4. 48 Volt DC (to external fused 48 volt DC supply)

To connect the wires

1. Plug connector (1) into receptacle. Do not use ground connection through connector.
2. Insert stripped wires (2) and tighten screws (3).



Appendix E: Troubleshooting

VIDEO

No OSCAR or video at server

Check for loose video cable connection or bad video cable.

Confirm Devices, Names and Flag settings.

Reset settings to default in these dialog boxes.

No OSCAR at primary switch

On the front panel of the switch, confirm that the LED lights (if applicable).

Reconnect the power cord to the switch.

Replace the power cord.

Check AC outlet for power.

Check that the monitor is turned on.

Check the control for brightness on the monitor.

Replace the monitor.

MOUSE

Mouse error on start up

Check for loose mouse cable connection.

Check for PS/2 keyboard and mouse cable cross-connections.¹

Replace the mouse cable.

Check the Internet for the latest firmware version of the mouse.

If a mouse is connected to the serial port on the server, install the Serial-to-PS/2 mouse adaptor (Avocent part number ELC-11KM).

Mouse displays erratic behavior or pointer is frozen on display

Reset the mouse in OSCAR:² *Main - Commands*, then type **Alt+R**.

Reset the mouse by pressing the Reset button on the back panel of the switch.²

Check the Internet for the latest firmware version of the mouse.

¹ Some servers require restarting when the keyboard cable is disconnected from the server. For this reason, perform these tests when the server can be restarted.

² Must have performed Snapshot in order for the reset function to work properly.

KEYBOARD

Console keyboard is not working or cannot start OSCAR

Ensure that Delay Time is off. Click *Setup - Menu*, Type **0** secs for Delay Time.

Check keyboard operation. See if the **Num Lock** and **Caps Lock** keys light.

Keyboard worked, but then stopped working with one server

Check for loose keyboard cable connection or bad keyboard cable.¹

Check maximum length of the keyboard cable (maximum length = 12 feet).

Check maximum length of station cable extension.

Press the Reset button on the back panel of the switch to reset all keyboards and mouse devices on all servers (must have performed Snapshot).

Keyboard never worked on one server

Check for PS/2 keyboard and mouse cable cross connections.¹

Replace interconnecting keyboard cable.¹

Disconnect and reconnect the interconnecting keyboard cable.¹

Check length of the interconnecting keyboard cable (maximum length = 12 feet).

Check maximum length of station cable extension.

Replace the station keyboard.¹

Keyboard signal never worked on all servers or stopped working with one server

Check for loose station keyboard cable.

Check maximum length of station cable extension (maximum length = 12 feet).

Replace the station keyboard.¹

Press the Reset button on the back panel of the switch (must have performed Snapshot in order for reset function to work properly).

Check for loose interconnecting keyboard cables.

Keyboard error on startup

Check the Web for the latest firmware version of the keyboard.

Keystrokes shifted, swaps upper case for lower case

Server keyboard left in shifted state when last selected. Press both **Shift** keys to change keystrokes to lower case or upper case.

Keystrokes are not working properly

Check that keystrokes are not in locked mode. On the left side of the keyboard, press **Caps Lock+Shift+Control+Alt**.

On the right side of the keyboard, press **Alt+Control+Shift**.

¹Some servers require restarting when the keyboard cable is disconnected from the server. For this reason, perform these tests when the server can be restarted.

STATUS SYMBOLS

No or shows next to server number or name

Check for loose keyboard cable connection between server and switch.

Disconnect and reconnect the keyboard cable at the same port number on the switch.

Restart OSCAR: Press **Escape** or click *X* in Main dialog box to exit OSCAR. Then press **Print Screen**.

shows next to cascaded port

Disconnect and reconnect the keyboard cable at the same port number on the switch.

Replace keyboard cable.

shows next to server number or name when is expected

PS/2 interconnecting cable from another switch is connected in error to the port. Disconnect the secondary switch and connect the server to the port.

shows next to primary server when is expected

Confirm selection of the correct number of ports (4, 8, 10, 16) for the secondary switch in the Device Modify dialog box.

Confirm that all port settings are set to Standard if not connected to a secondary switch.

SWITCH BEHAVIORS

Switch selects servers at will

Ensure that scanning is off. To turn off scanning, click *Main - Commands*, then clear Enabled.

Same keystrokes or mouse movements display on one or more servers

Ensure that broadcasting is turned off. To turn off broadcasting, click *Main - Commands*, then clear Activated.

Can only select Port 1 on a secondary switch (selecting Port 1-4 selects Port 1-1)

Ensure correct settings in the Device Modify dialog box at the primary switch. Confirm the selection of the correct number of ports (2, 4, 8, 10, 16) for the secondary switch: *Main - Setup - Devices - Device Modify*.

Confirm that all port settings are set to Standard if connected to servers.

Broadcasting unavailable

Ensure that broadcasting is not in use by another user. Request that the other user deactivate broadcasting.

FIRMWARE UPDATES

Firmware does not download

Check for loose cable connections.

Replace serial cable.

Check that the serial cable is connected to the COM port on the server and to the serial port on the switch.

Download timed out

Confirm that the correct port was selected.

If another program is using the same port, quit the program.

If a serial cable is not installed, install one. If it is defective, replace it.

Visit the Avocent web site to see the latest firmware updates for your Outlook switch at: <http://www.avocent.com/>.

LIMITED WARRANTY

Avocent Corporation warrants to the original retail purchaser that this product is and will be free from defects in materials and workmanship for a period of 12 months from the date of purchase.

Additionally, all Avocent products carry an unconditional thirty-day satisfaction guarantee. If, for any reason, you are dissatisfied with the performance of this product, you may return it to the point of purchase for a refund of the purchase price (excluding shipping charges). This guarantee does not apply to special order products, and may not be available through all resellers. During the warranty period, purchaser must promptly call Avocent for a RETURN MATERIALS AUTHORIZATION (RMA) number. Make sure that the RMA number appears on the packing slip, proof of purchase, AND ON THE OUTSIDE OF EACH SHIPPING CARTON. Unauthorized returns or collect shipments will be refused.

Ship prepaid to: Avocent Corporation
 4991 Corporate Drive
 Huntsville, AL 35805 U.S.A.
 Telephone: (256) 430-4000

The above limited warranty is voided by occurrence of any of the following events, upon which the product is provided as is, with all faults, and with all disclaimers of warranty identified below:

1. If non-Avocent approved cabling is attached to the unit. Poorly constructed and miswired cabling can diminish video quality and damage equipment. Avocent manufactured cabling is built to high quality standards utilizing overall braided shield to comply with FCC emission standards, and each cable is individually tested under load.
2. If defect or malfunction was caused by abuse, mishandling, unauthorized repair, or use other than intended.
3. If unauthorized modifications were made to product.
4. If unreported damages occurred in any shipment of the product.
5. If damages were due to or caused by equipment or software not provided by Avocent.
6. If the unit is used with non-grounded or incorrectly polarized AC power.
7. If the product is used in contradiction to any instruction provided by any User Guide or Instruction Sheet provided to you or with the product.
8. If the product is damaged due to power surges, water exposure or act of God including lightning.

EXCEPT AS SPECIFICALLY PROVIDED ABOVE AND TO THE MAXIMUM EXTENT ALLOWED BY LAW, AVOCENT CORPORATION DISCLAIMS ALL WARRANTIES AND CONDITIONS WHETHER EXPRESS, IMPLIED, OR STATUTORY AS TO ANY MATTER WHATSOEVER INCLUDING, WITHOUT LIMITATION, TITLE, NON-INFRINGEMENT, CONDITION, MERCHANTABILITY OR FITNESS FOR ANY PARTICULAR OR INTENDED PURPOSE.

EXCEPT AS EXPRESSLY PROVIDED ABOVE AND TO THE MAXIMUM EXTENT ALLOWED BY LAW, AVOCENT CORPORATION SHALL NOT BE LIABLE FOR ANY SPECIAL, INDIRECT OR CONSEQUENTIAL DAMAGES (INCLUDING WITHOUT LIMITATION, LOSS OF PROFIT, LOSS OF BUSINESS, LOSS OF INFORMATION, FINANCIAL LOSS, PERSONAL INJURY, LOSS OF PRIVACY OR NEGLIGENCE) WHICH MAY BE CAUSED BY OR RELATED TO, DIRECTLY OR INDIRECTLY, THE USE OF A PRODUCT OR SERVICE, THE INABILITY TO USE A PRODUCT OR SERVICE, INADEQUACY OF A PRODUCT OR SERVICE FOR ANY PURPOSE OR USE THEREOF OR BY ANY DEFECT OR DEFICIENCY THEREIN EVEN IF AVOCENT CORPORATION OR AN AUTHORIZED AVOCENT DEALER HAS BEEN ADVISED OF THE POSSIBILITY OF SUCH DAMAGES OR LOSSES.



Avocent™

For Technical Support:

Email: support@avocent.com
www.avocent.com

Avocent Corporation
4991 Corporate Drive
Huntsville, Alabama 35805-6201 USA
Tel: +1 256 430 4000
Fax: +1 256 430 4031

Avocent Asia Pacific
Singapore Branch Office
100 Tras Street, #15-01/2
Amara Corporate Tower
Singapore 079027
Tel: +65 227 3773
Fax: +65 223 9155

Avocent Canada
50 Mural Street, Unit 5
Richmond Hill, Ontario
L4B 1E4 Canada
Tel: +1 877 992 9239
Fax: +1 877 524 2985

Avocent International Ltd.
Avocent House, Shannon Free Zone
Shannon, County Clare, Ireland
Tel: +353 61 715 292
Fax: +353 61 471 871

Avocent Germany
Gottlieb-Daimler-Straße 2-4
D-33803 Steinhagen
Germany
Tel: +49 5204 9134 0
Fax: +49 5204 9134 99